

CLDN18.2 MAB (ZOLBETUXIMAB) MAB)

目录: 28078

产品名称: CLDN18.2 (Zolbetuximab)

基因符号: GC-182;MAB-362;MAB362;laudiximab

描述: CLDN18.2 (zolbetuximab biosimilar)

背景: Research grade biosimilar. Not for use in therapeutic or diagnostic procedures for humans or animals.

经过测试的应用: Flow Cyt

推荐稀释度: Flow Cyt 1:100

种属反应性: Chimeric

亚型: IgG1

纯化: Purified from cell culture supernatant by affinity chromatography

种属反应性: Human CLDN18.2

成分: Lyophilized from sterile PBS, pH 7.4. 5 % – 8% trehalose is added as protectants before lyophilization.

储存和运输: Store at -20°C to -80°C for 12 months in lyophilized form.

After reconstitution, if not intended for use within a month, aliquot and store at -80°C (Avoid repeated freezing and thawing).

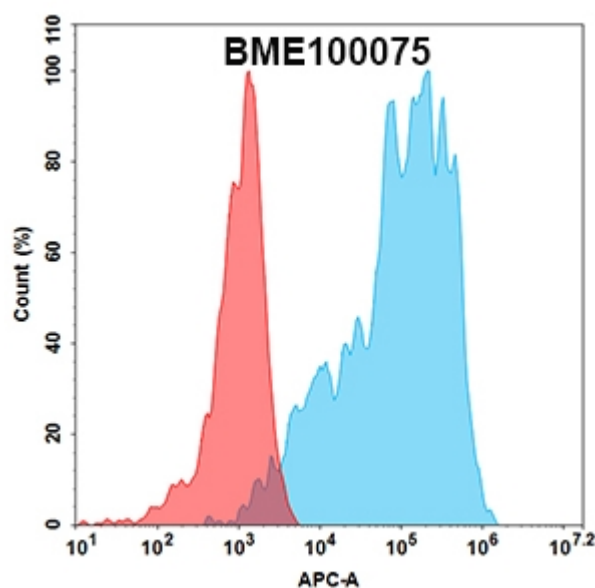


Figure 1. Flow cytometry analysis with CLDN18.2 mAb 1 µg/ml (zolbetuximab, 28078) on Expi293 cells transfected with human CLDN18.2 (Blue histogram) or Expi293 transfected with CLDN18.1 (Red histogram).

