

VIMENTIN MAB

Vimentin Monoclonal Antibody

货号: 26054

基因符号: VIM

描述: Vimentin 小鼠单克隆抗体

背景: Vimentin is an intermediate filament protein found in various non-epithelial cells, especially in mesenchymal cells. It is often used as a marker of mesenchymally-derived cells or cells undergoing an epithelial-to-mesenchymal transition (EMT) during both normal development and metastatic progression.

免疫原: A synthetic peptide from the internal region of human vimentin protein.

经过测试的应用: ELISA, WB, IHC, IP

推荐稀释度:

ELISA: 1:1000-1:5000

WB: 1:100-1:1000

IHC: 1:50-1:100

浓度: 1 mg/ml

种属反应性: Mouse

形式: Liquid

克隆性: Monoclonal

亚型: IgG

纯化:: Purified from ascites

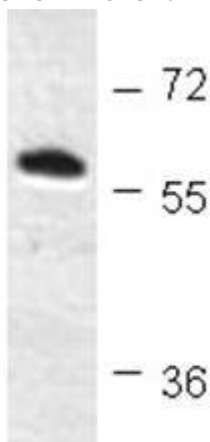
Preservative: No

成分: PBS (without Mg^{2+} and Ca^{2+}), pH 7.4, 150 mM NaCl, 50% glycerol

种属反应性: vimentin antibody recognizes vimentin of vertebrates.

储存条件:: Store at $-20^{\circ}C$. Avoid repeated freezing and thawing

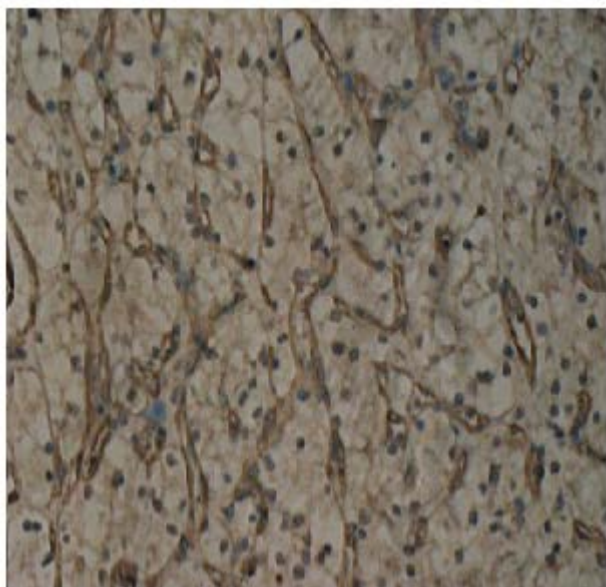
Western blot:



WB:Anti-Vimentin

Western blot analysis of recombinant vimentin protein. Purified His-tagged vimentin protein (货号10190) was blotted with vimentin monoclonal antibody (货号 26054).

Immunohistochemistry:



Immunohistochemical analysis of paraffin-embedded human renal cancer tissue with vimentin monoclonal antibody (Cat. #26054). Tissue samples were fixed with formaldehyde and blocked with 1% serum for 15 min at 37 °C. Antigen retrieval was by heat mediation in citrate buffer (pH6). Samples were then incubated with primary antibody (1:100 dilution) overnight at 4°C. A HRP-conjugated Goat mouse IgG (1:50 dilution) was used as secondary antibody.