

KLRG1 MAB (ULVIPRUBART MAB)

Cat.#: 28153

Product Name: Anti-KLRG1(Ulviprubart) Monoclonal Antibody

Synonyms: 2F1;CLEC15A;MAFA;MAFA-2F1;MAFA-L;MAFA-LIKE

Description: Anti-KLRG1(ulviprubart) Monoclonal Antibody

Background: Research grade biosimilar. Not for use in therapeutic or diagnostic procedures for humans or animals.

Applications: Flow Cyt

Recommended Dilutions: Flow Cyt 1:100

Host Species: Humanized

Isotype: IgG1(E239D, M241L)

Purification: Purified from cell culture supernatant by affinity chromatography

Species Reactivity: Human KLRG1

Constituents: Lyophilized from sterile PBS, pH 7.4. 5 % – 8% trehalose is added as protectants before lyophilization.

Storage & Shipping: Store at -20°C to -80°C for 12 months in lyophilized form. After reconstitution, if not intended for use within a month, aliquot and store at -80°C (Avoid repeated freezing and thawing).

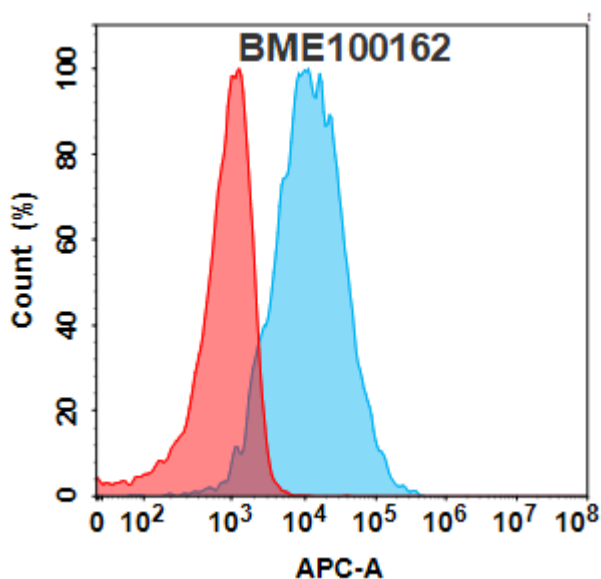


Figure 1. Flow cytometry analysis with 1µg/mL Anti-KLRG1(ulviprubart biosimilar) mAb (28153) on Expi293 cells transfected with Human KLRG1 protein (Blue histogram) or Expi293 transfected with irrelevant protein (Red histogram).



Product Description

Pioneering GTPase and Oncogene Product Development since 2010
