

## B-TUBULIN PAB

### β-Tubulin Polyclonal Antibody

**Cat. #:** 21089

**Gene Symbol:** TUBB

**Description:** Anti-β-Tubulin Rabbit Polyclonal Antibody

**Background:** There are five members of the tubulin family ( $\alpha$ ,  $\beta$ ,  $\gamma$ ,  $\delta$ , and  $\epsilon$ ). The most common members are  $\alpha$  and  $\beta$  tubulins which form heterodimers as the basic structural unit of microtubules.

**Immunogen:** A synthetic peptide from the internal region of human  $\beta$ -tubulin protein

**Applications:** ELISA, WB, IHC, IP

**Recommended Dilutions:**

ELISA: 1:100–1:5000

WB: 1:100–1:1000

IHC: 1:50–1:100

**Concentration:** 0.2 mg/ml

**Host Species:** Rabbit

**Format:** Liquid

**Clonality:** Polyclonal

**Isotype:** IgG

**Purity:** Purified from serum

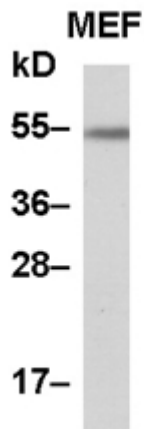
**Preservative:** No

**Constituents:** PBS (without  $Mg^{2+}$  and  $Ca^{2+}$ ), pH 7.4, 150 mM NaCl, 50% glycerol

**Species Reactivity:** β-Tubulin antibody recognizes β-tubulin proteins from vertebrates.

**Storage Conditions:** Store at  $-20^{\circ}C$ . Avoid repeated freezing and thawing

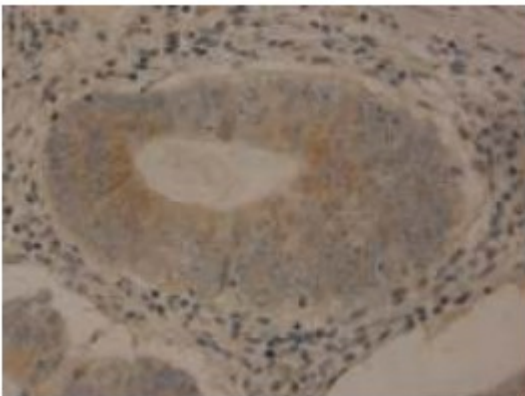
## Western blot:



### WB: anti-TUBB pAb

MEF whole-cell lysate was used for Western blot with anti- $\beta$ -tubulin polyclonal antibody (Cat # 21089).

### Immunohistochemistry:



Immunohistochemical staining of formalin-fixed paraffin-embedded colon carcinoma using the affinity purified Anti- $\beta$ -tubulin polyclonal antibody (Cat# 21089) with a 1:50 dilution.