

TSLP (DMC426) IGG1 CHIMERIC MAB

目录: 28220

产品名称: TSLP(DMC426) IgG1 Chimeric Monoclonal Antibody

基因符号: TSLP

描述: TSLP antibody(DMC426) IgG1 Chimeric Monoclonal Antibody

背景: This gene encodes a hemopoietic cytokine proposed to signal through a heterodimeric receptor complex composed of the thymic stromal lymphopoietin receptor and the IL-7R alpha chain. It mainly impacts myeloid cells and induces the release of T cell-attracting chemokines from monocytes and enhances the maturation of CD11c() dendritic cells. The protein promotes T helper type 2 (TH2) cell responses that are associated with immunity in various inflammatory diseases; including asthma; allergic inflammation and chronic obstructive pulmonary disease. The protein is therefore considered a potential therapeutic target for the treatment of such diseases. In addition; the shorter (predominant) isoform is an antimicrobial protein; displaying antibacterial and antifungal activity against *B. cereus*; *E. coli*; *E. faecalis*; *S. mitis*; *S. epidermidis*; and *C. albicans*. Alternative splicing of this gene results in multiple transcript variants.

经过测试的应用: Flow Cyt

推荐稀释度: Flow Cyt 1:100

种属反应性: Rabbit

亚型: Rabbit:Human Fc chimeric IgG1

纯化: Purified from cell culture supernatant by affinity chromatography

种属反应性: Human TSLP

成分: Lyophilized from sterile PBS, pH 7.4. 5 % – 8% trehalose is added as protectants before lyophilization.

储存和运输: Store at -20°C to -80°C for 12 months in lyophilized form. After reconstitution, if not intended for use within a month, aliquot and store at -80°C (Avoid repeated freezing and thawing).

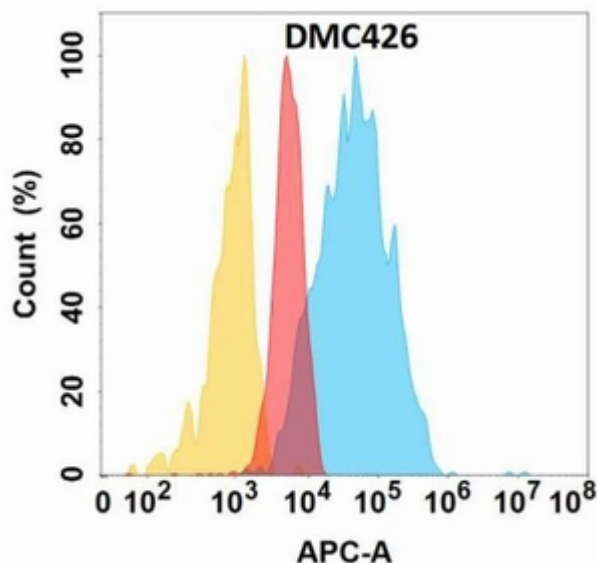


Figure 1. TSLP protein is highly expressed on the surface of Expi293 cell membrane. Flow cytometry analysis with TSLP (DMC426) on Expi293 cells transfected with human TSLP (Blue histogram) or Expi293 transfected with irrelevant protein (Red histogram), and Isotype antibody on Expi293 transfected with irrelevant protein (Orange histogram).