

TROP2 (DM76) RABBIT MAB

目录: 28393

产品名称: Trop2(DM76) Rabbit Monoclonal Antibody

基因符号: TACSTD2; GA733-1; MIS1; TROP2

描述: Trop2 antibody(DM76) Rabbit Monoclonal Antibody

背景: This intronless gene encodes a carcinoma-associated antigen. This antigen is a cell surface receptor that transduces calcium signals. Mutations of this gene have been associated with gelatinous drop-like corneal dystrophy.

经过测试的应用: ELISA; Flow Cyt

推荐稀释度: ELISA 1:5000-10000; Flow Cyt 1:100

种属反应性: Rabbit

亚型: Rabbit IgG

纯化: Purified from cell culture supernatant by affinity chromatography

种属反应性: Human Trop2

成分: Lyophilized from sterile PBS, pH 7.4. 5% - 8% trehalose is added as protectants before lyophilization.

储存和运输: Store at -20°C to -80°C for 12 months in lyophilized form. After reconstitution, if not intended for use within a month, aliquot and store at -80°C (Avoid repeated freezing and thawing).

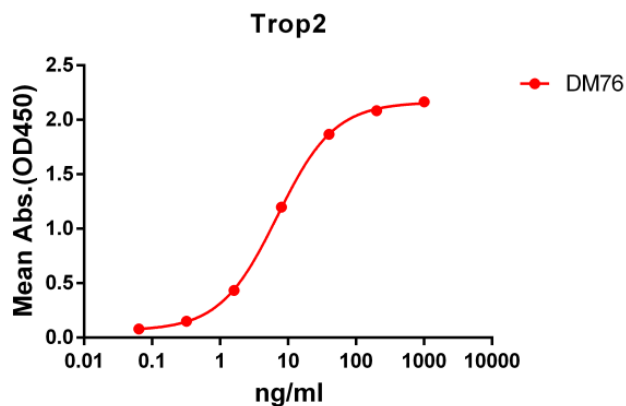


Figure 1. ELISA plate pre-coated by 2 µg/ml (100 µl/well) Human Trop2 protein, mFc-His tagged protein 11304 can bind Rabbit Trop2 monoclonal antibody (clone: DM76) in a linear range of 1-100 ng/ml.

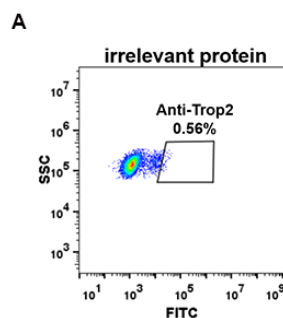


Figure 2. Expi 293 cell line transfected with irrelevant protein (A) and human Trop2 (B) were surface stained with Rabbit Trop2 monoclonal antibody 1 µg/ml (clone: DM76) followed by Alexa 488-conjugated rabbit IgG secondary antibody.