

TROP2 (DM75) RABBIT MAB

Cat.#: 28391

Product Name: Anti-Trop2(DM75) Rabbit Monoclonal Antibody

Synonyms: TACSTD2; GA733-1; MIS1; TROP2

Description: Anti-Trop2 antibody(DM75) Rabbit Monoclonal Antibody

Background: This intronless gene encodes a carcinoma-associated antigen. This antigen is a cell surface receptor that transduces calcium signals. Mutations of this gene have been associated with gelatinous drop-like corneal dystrophy.

Applications: ELISA; Flow Cyt

Recommended Dilutions: ELISA 1:5000-10000; Flow Cyt 1:100

Host Species: Rabbit

Isotype: Rabbit IgG

Purification: Purified from cell culture supernatant by affinity chromatography

Species Reactivity: Human Trop2

Constituents: Lyophilized from sterile PBS, pH 7.4. 5% - 8% trehalose is added as protectants before lyophilization.

Storage & Shipping: Store at -20°C to -80°C for 12 months in lyophilized form. After reconstitution, if not intended for use within a month, aliquot and store at -80°C (Avoid repeated freezing and thawing).

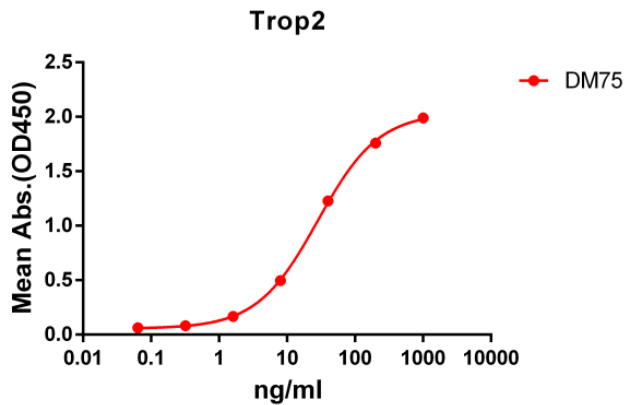


Figure 1. ELISA plate pre-coated by 2 µg/ml (100 µl/well) Human Trop2 protein, mFc-His tagged protein 11304 can bind Rabbit anti-Trop2 monoclonal antibody (clone: DM75) in a linear range of 1-100 ng/ml.

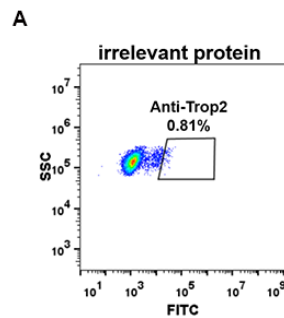


Figure 2. Expi 293 cell line transfected with irrelevant protein (A) and human Trop2 (B) were surface stained with Rabbit anti-Trop2 monoclonal antibody 1µg/ml (clone: DM75) followed by Alexa 488-conjugated anti-rabbit IgG secondary antibody.