

TREM2 (DMC223) IGG1 CHIMERIC MAB

目录: 28172

产品名称: TREM2(DMC223) IgG1 Chimeric Monoclonal Antibody

基因符号: PLOSL2; TREM-2; Trem2a; Trem2b; Trem2c

描述: TREM2 antibody(DMC223) IgG1 Chimeric Monoclonal Antibody

背景: This gene encodes a membrane protein that forms a receptor signaling complex with the TYRO protein tyrosine kinase binding protein. The encoded protein functions in immune response and may be involved in chronic inflammation by triggering the production of constitutive inflammatory cytokines. Defects in this gene are a cause of polycystic lipomembranous osteodysplasia with sclerosing leukoencephalopathy (PLOSL). Alternative splicing results in multiple transcript variants encoding different isoforms.

经过测试的应用: ELISA; Flow Cyt

推荐稀释度: ELISA 1:5000-10000; Flow Cyt 1:100

种属反应性: Rabbit

亚型: Rabbit:Human Fc chimeric IgG1

纯化: Purified from cell culture supernatant by affinity chromatography

种属反应性: Human TREM2

成分: Lyophilized from sterile PBS, pH 7.4. 5 % – 8% trehalose is added as protectants before lyophilization.

储存和运输: Store at -20°C to -80°C for 12 months in lyophilized form.

After reconstitution, if not intended for use within a month, aliquot and store at -80°C (Avoid repeated freezing and thawing).

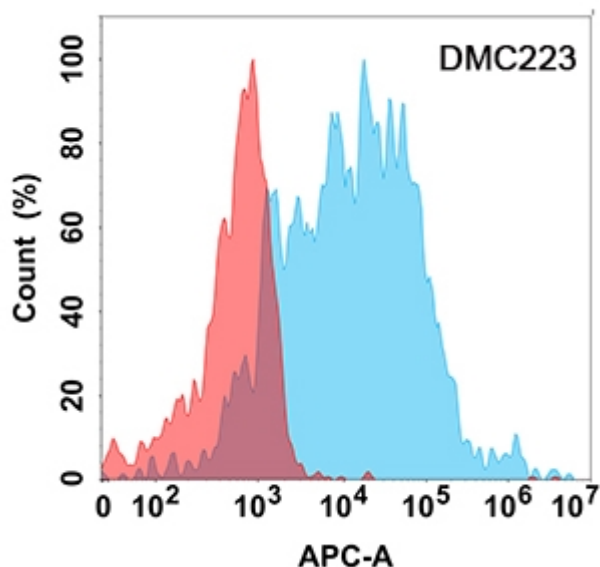


Figure 1. Flow cytometry analysis with TREM2 (DMC223) on Expi293 cells transfected with human TREM2 (Blue histogram) or Expi293 transfected with irrelevant protein (Red histogram).