

HER2 MAB (TRASTUZUMAB)

Cat.#: 28056

Product Name: Anti-Her2 (Trastuzumab) Monoclonal Antibody

Synonyms: ERBB2;D340;ER-2:neu;ER2;LN19;EU;GL;KRI

Description: Anti-Her2 (trastuzumab biosimilar) Monoclonal Antibody

Background: Research grade biosimilar. Not for use in therapeutic or diagnostic procedures for humans or animals.

Applications: ELISA; Flow Cyt

Recommended Dilutions: ELISA 1:5000-10000; Flow Cyt 1:100

Host Species: Humanized

Isotype: IgG1

Purification: Purified from cell culture supernatant by affinity chromatography

Species Reactivity: Human Her2

Constituents: Lyophilized from sterile PBS, pH 7.4. 5 % – 8% trehalose is added as protectants before lyophilization.

Storage & Shipping: Store at -20°C to -80°C for 12 months in lyophilized form. After reconstitution, if not intended for use within a month, aliquot and store at -80°C (Avoid repeated freezing and thawing).

Anti-ERBB2 (trastuzumab biosimilar) mAb ELISA

0.1 μ g of Human ERBB2, His tagged protein per well

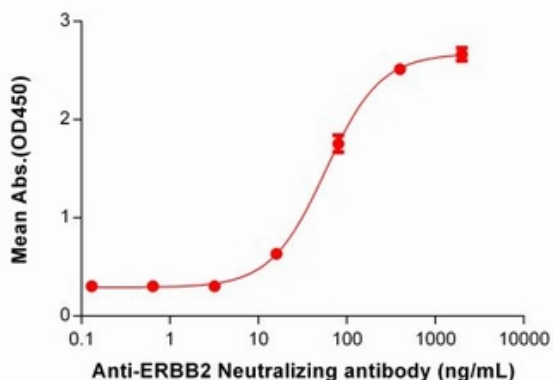


Figure 1. ELISA plate pre-coated by 1 μ g/ml (100 μ l/well) Human Her2, His tagged protein 11214 can bind Anti-Her2 Neutralizing antibody (28056) in a linear range of 3.2-400 ng/ml.

Anti-ERBB2 (trastuzumab biosimilar) mAb ELISA

0.1 μ g of Human Her2, hFc tagged protein per well

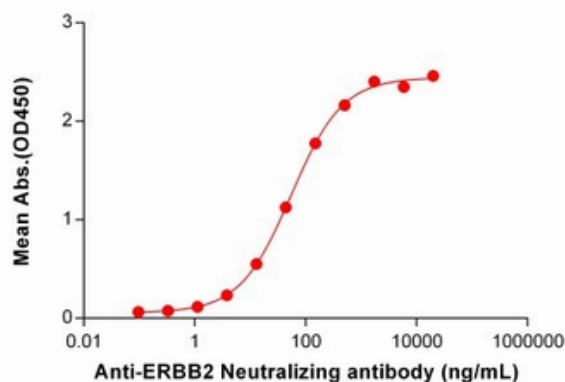


Figure 2. ELISA plate pre-coated by 1 μ g/ml (100 μ l/well) Human Her2 Protein, hFc Tag (11461) can bind Anti-Her2 Neutralizing antibody (28056) in a linear range of 3.81-1730.10 ng/mL. In order to specifically detect 28056, mouse anti-human Fab-specific antibody was used as detection antibody.

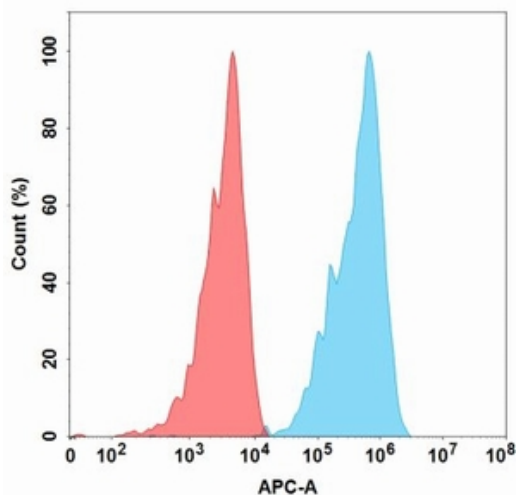


Figure 3. Flow cytometry analysis with 15 μ g/mL Anti-Her2 (trastuzumab) mAb (28056) on Expi293 cells transfected with Human Her2 protein (Blue histogram) or Expi293 transfected with irrelevant protein (Red histogram).