

TIM3 (DM83) RABBIT MAB

目录: 28407

产品名称: TIM3(DM83) Rabbit Monoclonal Antibody

基因符号: HAVCR2; TIM3; TIMD3; FLJ14428; KIM3

描述: TIM3 antibody(DM83) Rabbit Monoclonal Antibody

背景: The protein encoded by this gene belongs to the immunoglobulin superfamily; and TIM family of proteins. CD4-positive T helper lymphocytes can be divided into types 1 (Th1) and 2 (Th2) on the basis of their cytokine secretion patterns. Th1 cells are involved in cell-mediated immunity to intracellular pathogens and delayed-type hypersensitivity reactions; whereas, Th2 cells are involved in the control of extracellular helminthic infections and the promotion of atopic and allergic diseases. This protein is a Th1-specific cell surface protein that regulates macrophage activation; and inhibits Th1-mediated auto- and alloimmune responses; and promotes immunological tolerance.

经过测试的应用: ELISA; Flow Cyt

推荐稀释度: ELISA 1:5000-10000; Flow Cyt 1:100

种属反应性: Rabbit

亚型: Rabbit IgG

纯化: Purified from cell culture supernatant by affinity chromatography

种属反应性: Human TIM3

成分: Lyophilized from sterile PBS, pH 7.4. 5% - 8% trehalose is added as protectants before lyophilization.

储存和运输: Store at -20°C to -80°C for 12 months in lyophilized form. After reconstitution, if not intended for use within a month, aliquot and store at -80°C (Avoid repeated freezing and thawing).

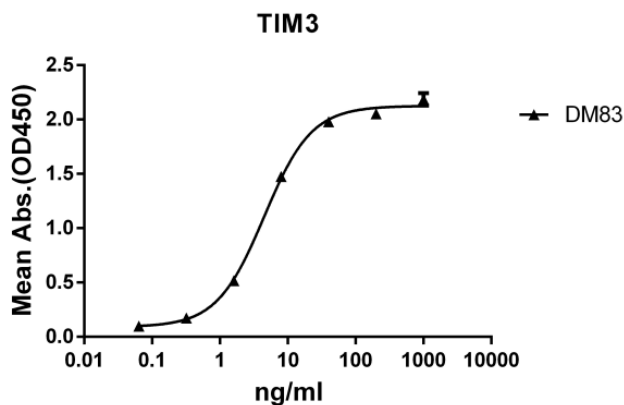


Figure 1. ELISA plate pre-coated by 2 µg/ml (100 µl/well) Human TIM3 protein, mFc-His tagged protein III58 can bind Rabbit TIM3 monoclonal antibody (clone: DM83) in a linear range of 0.32-40 ng/ml.

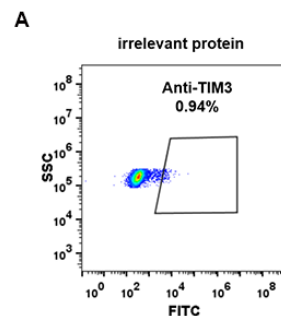


Figure 2. Expi 293 cell line transfected with irrelevant protein (A) and human TIM3 (B) were surface stained with Rabbit TIM3 monoclonal antibody 1 µg/ml (clone: DM83) followed by Alexa 488-conjugated rabbit IgG secondary antibody.