

## TGFBR2 (DMC467) IGG1 CHIMERIC MAB

**Cat.#:** 28243

**Product Name:** Anti-TGFBR2(DMC467) IgG1 Chimeric Monoclonal Antibody

**Synonyms:** AAT3; FAA3; LDS1B; LDS2; LDS2B; MFS2; RIIC; TAAD2; TBR-ii; TBRII; TGFbeta-RII; TGFR-2

**Description:** Anti-TGFBR2 antibody(DMC467) IgG1 Chimeric Monoclonal Antibody

**Background:** The protein encoded by this gene is a transmembrane protein that has a protein kinase domain; forms a heterodimeric complex with TGF-beta receptor type-1; and binds TGF-beta. This receptor:ligand complex phosphorylates proteins; which then enter the nucleus and regulate the transcription of genes related to cell proliferation; cell cycle arrest; wound healing; immunosuppression; and tumorigenesis. Mutations in this gene have been associated with Marfan Syndrome; Loeys-Deitz Aortic Aneurysm Syndrome; and the development of various types of tumors. Alternatively spliced transcript variants encoding different isoforms have been characterized. [provided by RefSeq; Aug 2017]

**Applications:** Flow Cyt

**Recommended Dilutions:** Flow Cyt 1:100

**Host Species:** Rabbit

**Isotype:** Rabbit:Human Fc chimeric IgG1

**Purification:** Purified from cell culture supernatant by affinity chromatography

**Species Reactivity:** Human TGFBR2

**Constituents:** Lyophilized from sterile PBS, pH 7.4. 5 % – 8% trehalose is added as protectants before lyophilization.

**Storage & Shipping:** Store at -20°C to -80°C for 12 months in lyophilized form. After reconstitution, if not intended for use within a month, aliquot and store at -80°C (Avoid repeated freezing and thawing).

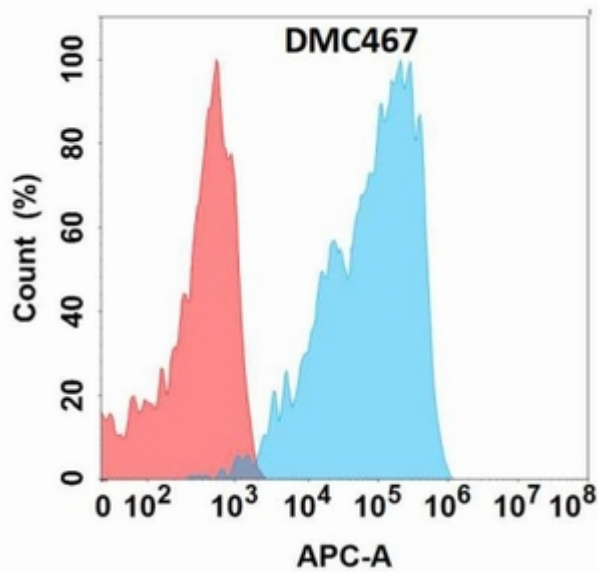


Figure 1. Flow cytometry analysis with Anti-TGFBR2 (DMC467) on Expi293 cells transfected with human TGFBR2 (Blue histogram) or Expi293 transfected with irrelevant protein (Red histogram).