

## TSLP MAB (TEZPELUMAB)

**Cat.#:** 28110

**Product Name:** Anti-TSLP(Tezepelumab) Monoclonal Antibody

**Synonyms:** Thymic stromal lymphopoietin

**Description:** Anti-TSLP(tezepelumab ) Monoclonal Antibody

**Background:** Research grade biosimilar. Not for use in therapeutic or diagnostic procedures for humans or animals.

**Applications:** ELISA; Flow Cyt

**Recommended Dilutions:** ELISA 1:5000-10000; Flow Cyt 1:100

**Host Species:** Homo sapiens

**Isotype:** IgG2

**Purification:** Purified from cell culture supernatant by affinity chromatography

**Species Reactivity:** Human TSLP

**Constituents:** Lyophilized from sterile PBS, pH 7.4. 5 % – 8% trehalose is added as protectants before lyophilization.

**Storage & Shipping:** Store at  $-20^{\circ}\text{C}$  to  $-80^{\circ}\text{C}$  for 12 months in lyophilized form. After reconstitution, if not intended for use within a month, aliquot and store at  $-80^{\circ}\text{C}$  (Avoid repeated freezing and thawing).

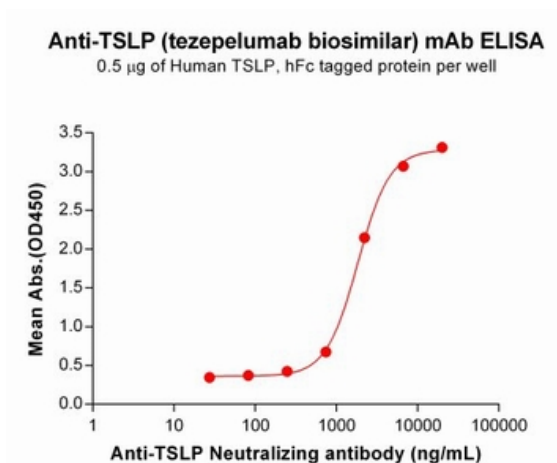


Figure 1. ELISA plate pre-coated by  $5\ \mu\text{g}/\text{mL}$  ( $100\ \mu\text{l}/\text{well}$ ) Human TSLP Protein, hFc Tag (11433) can bind Anti-TSLP Neutralizing antibody (28110) in a linear range of 741-6667 ng/mL. In order to specifically detect 28110, mouse anti-human Fab-specific antibody was used as detection antibody.

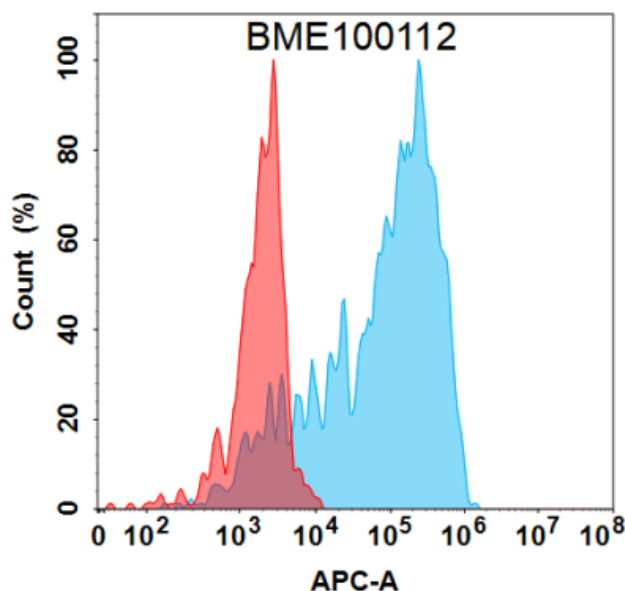


Figure 2. Flow cytometry analysis under cell membrane permeable condition with  $1\ \mu\text{g}/\text{mL}$  Anti-TSLP (tezepelumab biosimilar) mAb (28110) on Expi293 cells transfected with Human TSLP protein (Blue histogram) or Expi293 transfected with irrelevant protein (Red histogram).



# Product Description

Pioneering GTPase and Oncogene Product Development since 2010

---