

ANTI-SUMO NANOBODY

Anti-Sumo Nanobody

Cat. #: 26405

Size: 100 μ L

Gene Symbol: Sumo

Description: Anti-Sumo Nanobody

Background: Sumo tag is a polypeptide sequence containing Sumo (small ubiquitin-like modifier) domain, which is often connected to target proteins to study the function and interaction of Sumo modification. Anti-sumo tag antibodies can specifically recognize and capture Sumo tags. By binding to the Sumo tag, this antibody can be used to detect, purify and localize Sumo-modified proteins.

Applications: FACS, Elisa, IP, Co-IP, IHC

Dilution: 1:1800

Molecular Weight: 15 kD

Host Species: Human

Format: Liquid

Clonality: Recombinant Monoclonal

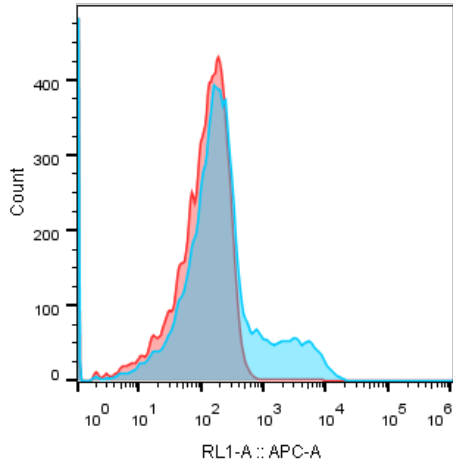
Tag: His, Myc

Constituents: PBS, 40% Glycerol, 0.03% proclin300

Species: Human

Storage Conditions: Store at 4 \times , 6 months; -20 \times , 2 years

FACS \square Anti-sumo antibody at 1/1800 dilution :



	Sample Name	Subset Name	Count
■	1_ 30-SUMO AT1R+1F4_30_F4.fcs	Lymphocytes	20526
■	1_ 22 mock+1F4_22_F3.fcs	Lymphocytes	20745

1_ 30-SUMO AT1R+1F4_30_F4.fcs
Lymphocytes
20526