

**SUMO-2/3 PAB****SUMO-2/3 Polyclonal Antibody****Cat. #:** 21237**Gene Symbol:** SUMO2/3**Description:** Anti-SUMO-2/3 Rabbit polyclonal Antibody**Background:** Small Ubiquitin-like Modifier or SUMO proteins are a family of small proteins that are covalently attached to and detached from other proteins in cells to modify their function. SUMOylation is a post-translational modification involved in various cellular processes, such as nuclear-cytosolic transport, transcriptional regulation, apoptosis, protein stability, response to stress, and progression through the cell cycle. There are 3 confirmed SUMO isoforms in humans: SUMO-1, SUMO-2 and SUMO-3. SUMO-2 and -3 show a high degree of similarity to each other and are distinct from SUMO-1.**Immunogen:** A synthetic peptide corresponding to residues near the C-terminal of human SUMO-2/3.**Applications:** ELISA, WB, IHC, IP**Recommended Dilutions:**

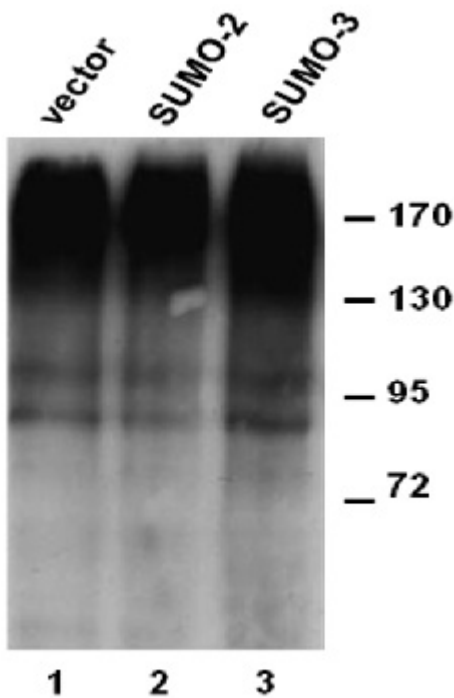
ELISA: 1:1000-1:5000

WB: 1:100-1:1000

IHC: 1:50-1:100

**Concentration:** 1 mg/ml**Host Species:** Rabbit**Format:** Liquid**Clonality:** Polyclonal**Isotype:** IgG**Purity:** Purified from serum**Preservative:** No**Constituents:** PBS (without Mg<sup>2+</sup> and Ca<sup>2+</sup>), pH 7.4, 150 mM NaCl, 50% glycerol**Species Reactivity:** Detects SUMO-2/3 but not SUMO-1 from vertebrates.**Storage Conditions:** Store at -20°C. Avoid repeated freezing and thawing

## Western blot:



WB:anti-SUMO-2/3 pAb

### Western blot analysis of over-expressed SUMO-2 and SUMO-3 proteins.

HEK293 cells were transfected with SUMO-2 (lane 2) and SUMO-3 (lane 3) cDNAs and control empty vector (lane 1). Cell lysates were blotted with anti-SUMO-2/3 rabbit polyclonal antibody (Cat. # 21237).