

## SUMO-1 PAB

### SUMO-1 Polyclonal Antibody

货号: 21236

基因符号: SUMO1

描述: SUMO-1 Rabbit polyclonal Antibody

背景: Small Ubiquitin-like Modifier or SUMO proteins are a family of small proteins that are covalently attached to and detached from other proteins in cells to modify their function. SUMOylation is a post-translational modification involved in various cellular processes, such as nuclear-cytosolic transport, transcriptional regulation, apoptosis, protein stability, response to stress, and progression through the cell cycle. There are 3 confirmed SUMO isoforms in humans: SUMO-1, SUMO-2 and SUMO-3. SUMO-2 and -3 show a high degree of similarity to each other and are distinct from SUMO-1.

免疫原: A synthetic peptide corresponding to residues near the C-terminal of human SUMO-1.

经过测试的应用: ELISA, WB, IHC, IP

推荐稀释度:

ELISA: 1:1000-1:5000

WB: 1:100-1:1000

IHC: 1:50-1:100

浓度: 1 mg/ml

种属反应性: Rabbit

形式: Liquid

克隆性: Polyclonal

亚型: IgG

纯化: Purified from serum

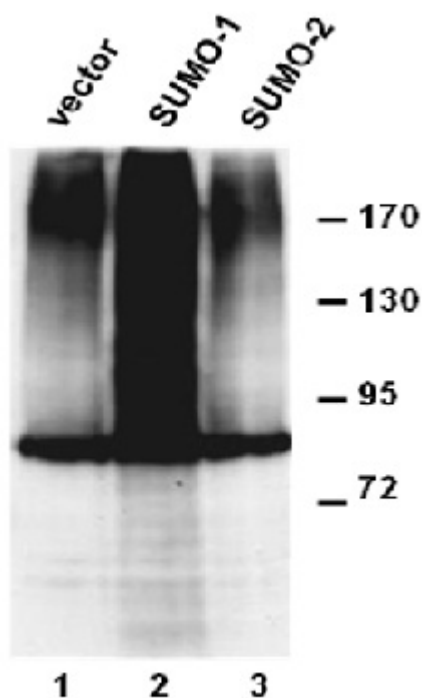
**Preservative:** No

成分: PBS (without  $Mg^{2+}$  and  $Ca^{2+}$ ), pH 7.4, 150 mM NaCl, 50% glycerol

种属反应性: Detects SUMO-1 but not SUMO-2/3 from vertebrates.

储存条件: Store at  $-20^{\circ}C$ . Avoid repeated freezing and thawing

## Western blot:



WB:anti-SUMO-1 pAb

### Western blot analysis of over-expressed SUMO-1 proteins.

HEK293 cells were transfected with SUMO-1 (lane 2) and SUMO-2 (lane 3) cDNAs and control empty vector (lane 1). Cell lysates were blotted with SUMO-1 rabbit polyclonal antibody (货号 21236).