

HUMAN SLC2A12 FULL LENGTH PROTEIN

目录: 11065

产品名称: Human SLC2A12 Full Length Protein

规格: 10 µg; 50 µg and 100 µg

基因符号: GLUT8; GLUT12

Target: SLC2A12

UNIPROT ID: Q8TD20

描述: Human SLC2A12 Full Length Protein-Synthetic Nanodisc

背景: SLC2A12 belongs to a family of transporters that catalyze the uptake of sugars through facilitated diffusion. This family of transporters show conservation of 12 transmembrane helices as well as functionally significant amino acid residues.

Species/Host: HEK293

Molecular Weight: The human full length SLC2A12 protein has a MW of 67.0 kDa

Formulation & Reconstitution: Lyophilized from nanodisc solubilization buffer (20 mM Tris-HCl, 150 mM NaCl, pH 8.0). Normally 5% – 8% trehalose is added as protectants before lyophilization.

储存和运输: Store at -20°C to -80°C for 12 months in lyophilized form. After reconstitution, if not intended for use within a month, aliquot and store at -80°C (Avoid repeated freezing and thawing). Lyophilized proteins are shipped at ambient temperature.

Protein Families: Transmembrane

Protein Pathways: N/A

ELISA assay to evaluate SLC2A12-Nanodisc 0.2µg Human SLC2A12-Nanodisc per well

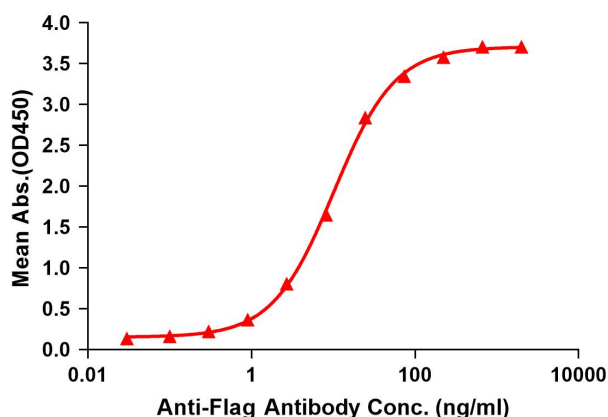


Figure 1. Elisa plates were pre-coated with Flag Tag SLC2A12-Nanodisc (0.2µg/per well). Serial diluted Flag monoclonal antibody solutions were added, washed, and incubated with secondary antibody before Elisa reading. From above data, the EC50 for Flag monoclonal antibody binding with SLC2A12-Nanodisc is 10.17ng/ml.

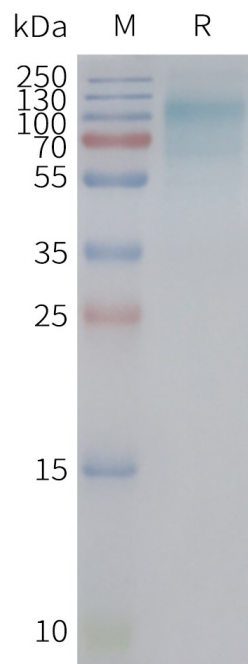


Figure 2. Human SLC2A12-Nanodisc, Flag Tag on SDS-PAGE