

SLAMF1 (DMC445) IGG1 CHIMERIC MAB

目录: 28233

产品名称: SLAMF1(DMC445) IgG1 Chimeric Monoclonal Antibody

基因符号: SLAMF1; CD150; CDw150; SLAM; IPO-3

描述: SLAMF1 antibody(DMC445) IgG1 Chimeric Monoclonal Antibody

背景: SLAMF1 (Signaling Lymphocytic Activation Molecule Family Member 1) is a Protein Coding gene. Diseases associated with SLAMF1 include Measles and Subacute Sclerosing Panencephalitis. Among its related pathways are Dendritic Cells Developmental Lineage Pathway and T Cell Co-Signaling Pathway: Ligand-Receptor Interactions. Gene Ontology (GO) annotations related to this gene include antigen binding. An important paralog of this gene is LY9.

经过测试的应用: Flow Cyt

推荐稀释度: Flow Cyt 1:100

种属反应性: Rabbit

亚型: Rabbit:Human Fc chimeric IgG1

纯化: Purified from cell culture supernatant by affinity chromatography

种属反应性: Human SLAMF1

成分: Lyophilized from sterile PBS, pH 7.4. 5 % – 8% trehalose is added as protectants before lyophilization.

储存和运输: Store at -20°C to -80°C for 12 months in lyophilized form. After reconstitution, if not intended for use within a month, aliquot and store at -80°C (Avoid repeated freezing and thawing).

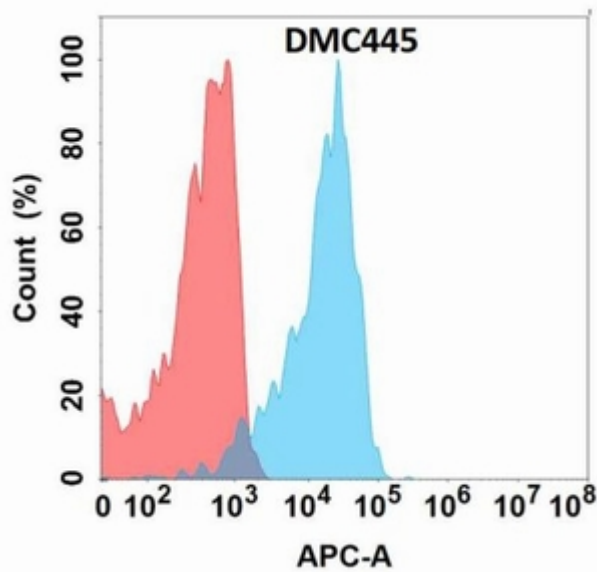


Figure 1. Flow cytometry analysis with SLAMF1 (DMC445) on Expi293 cells transfected with human SLAMF1 (Blue histogram) or Expi293 transfected with irrelevant protein (Red histogram).