

## SIRPA(DM8) RABBIT MAB

目录: 28292

产品名称: SIRPa(DM8) Antibody Rabbit Monoclonal Antibody

基因符号: BIT; CD172a; MFR; MYD-1; P84; PTPNS1; SHPS-1; SHPS1; SIRP; SIRP-ALPHA-1; SIRPalpha; SIRPalpha2

描述: SIRPa(DM8) antibody Rabbit Monoclonal Antibody

背景: The protein encoded by this gene is a member of the signal-regulatory-protein (SIRP) family; and also belongs to the immunoglobulin superfamily. SIRP family members are receptor-type transmembrane glycoproteins known to be involved in the negative regulation of receptor tyrosine kinase-coupled signaling processes. This protein can be phosphorylated by tyrosine kinases. The phospho-tyrosine residues of this PTP have been shown to recruit SH2 domain containing tyrosine phosphatases (PTP); and serve as substrates of PTPs. This protein was found to participate in signal transduction mediated by various growth factor receptors. CD47 has been demonstrated to be a ligand for this receptor protein. This gene and its product share very high similarity with several other members of the SIRP family. These related genes are located in close proximity to each other on chromosome 20p13. Multiple alternatively spliced transcript variants have been determined for this gene. [provided by RefSeq; Jul 2008]

经过测试的应用: ELISA; Flow Cyt; IF; IP

推荐稀释度: Flow Cyt 1:100; IP 1:30

种属反应性: Rabbit

亚型: Rabbit IgG

纯化: Purified from cell culture supernatant by affinity chromatography

种属反应性: Human SIRPa

成分: Lyophilized from sterile PBS, pH 7.4. 5 % – 8% trehalose is added as protectants before lyophilization.

储存和运输: Store at -20°C to -80°C for 12 months in lyophilized form. After reconstitution, if not intended for use within a month, aliquot and store at -80°C (Avoid repeated freezing and thawing).

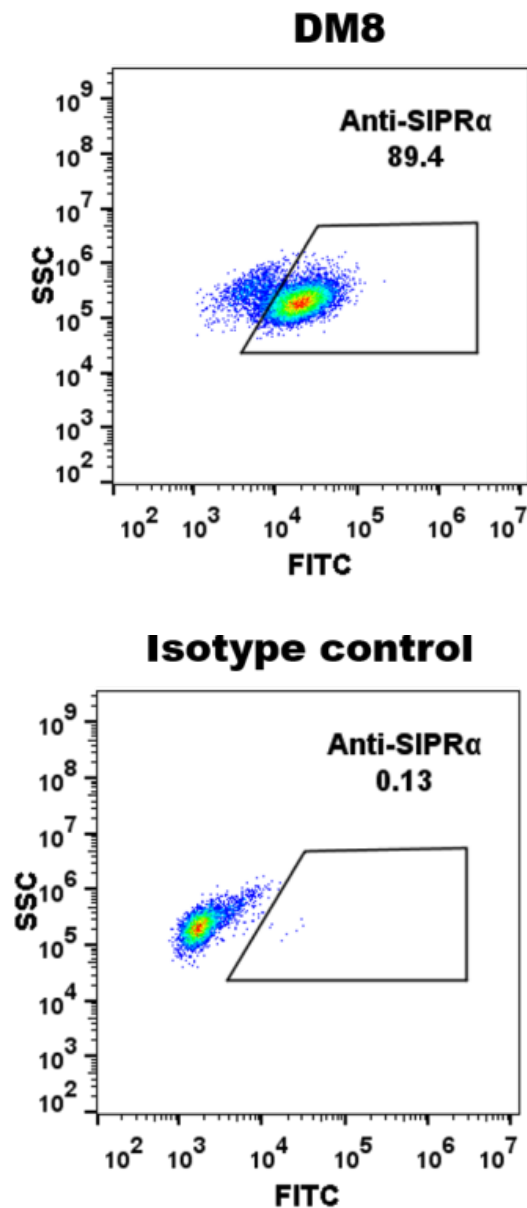


Figure 1. THP-1 cell line were surface stained with Rabbit SIRP $\alpha$  monoclonal antibody 1 $\mu$ g/ml ( clone: DM8) and Rabbit IgG isotype control antibody followed by Alexa 488-conjugated rabbit IgG secondary antibody.

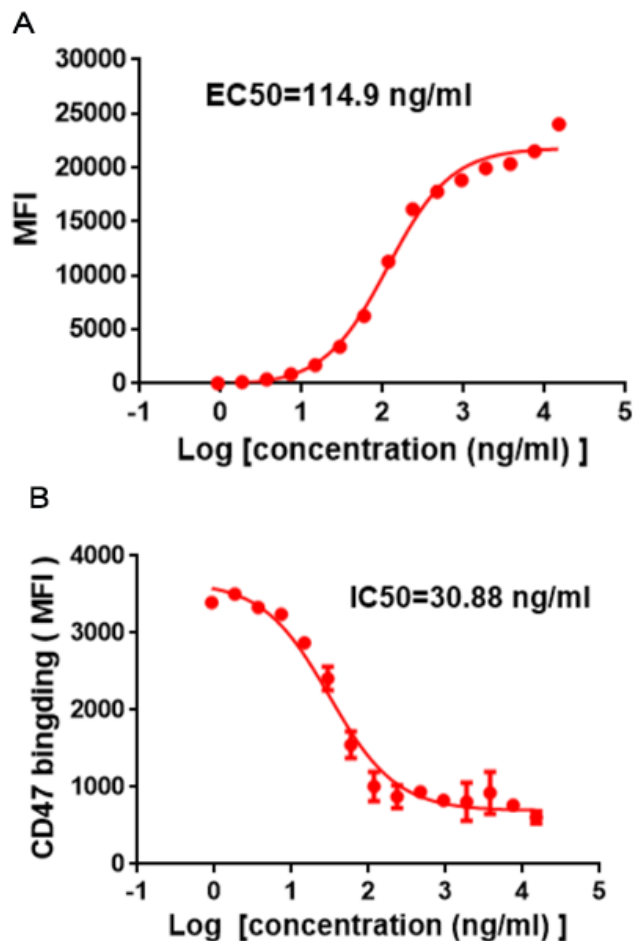


Figure 2. A) Flow cytometry data of serially titrated Rabbit SIRP $\alpha$  monoclonal antibody ( clone: DM8). The Y-axis represents the mean fluorescence intensity (MFI) while the X-axis represents the concentration of IgG used. B) Competition assay demonstrating DM8 blockade of CD47 binding to THP-1 cells. IC50=30.88ng/ml.