

SIGLEC7 (DMC475) IGG1 CHIMERIC MAB

目录: 28251

产品名称: SIGLEC7(DMC475) IgG1 Chimeric Monoclonal Antibody

基因符号: AIRM-1; AIRM1; CD328; CDw328; D-siglec; p75; p75:AIRM1; QA79; SIGLEC-7; SIGLEC19P; SIGLECP2

描述: SIGLEC7 antibody(DMC475) IgG1 Chimeric Monoclonal Antibody

背景: Putative adhesion molecule that mediates sialic-acid dependent binding to cells. Preferentially binds to alpha-2,3- and alpha-2,6-linked sialic acid. Also binds disialogangliosides (disialogalactosyl globoside; disialyl lactotetraosylceramide and disialyl GalNAc lactotetraosylceramide). The sialic acid recognition site may be masked by cis interactions with sialic acids on the same cell surface. In the immune response; may act as an inhibitory receptor upon ligand induced tyrosine phosphorylation by recruiting cytoplasmic phosphatase(s) via their SH2 domain(s) that block signal transduction through dephosphorylation of signaling molecules. Mediates inhibition of natural killer cells cytotoxicity. May play a role in hemopoiesis. Inhibits differentiation of CD34 cell precursors towards myelomonocytic cell lineage and proliferation of leukemic myeloid cells (in vitro).[UniProtKB:Swiss-Prot Function]

经过测试的应用: Flow Cyt

推荐稀释度: Flow Cyt 1:100

种属反应性: Rabbit

亚型: Rabbit:Human Fc chimeric IgG1

纯化: Purified from cell culture supernatant by affinity chromatography

种属反应性: Human SIGLEC7

成分: Lyophilized from sterile PBS, pH 7.4. 5 % – 8% trehalose is added as protectants before lyophilization.

储存和运输: Store at -20°C to -80°C for 12 months in lyophilized form.

After reconstitution, if not intended for use within a month, aliquot and store at -80°C (Avoid repeated freezing and thawing).

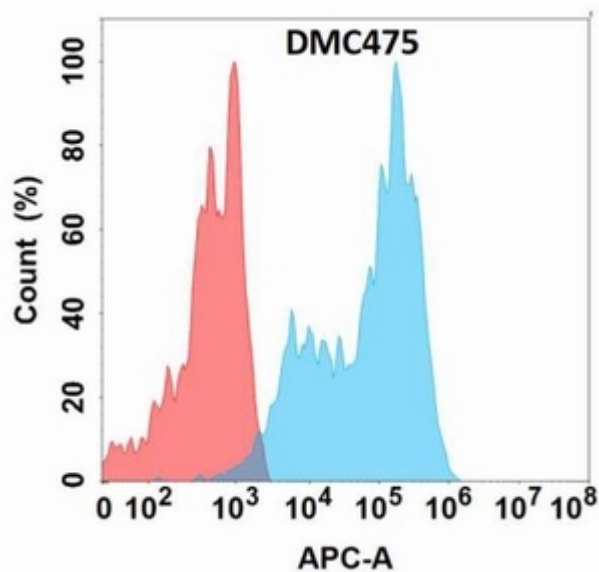


Figure 1. Flow cytometry analysis with SIGLEC7 (DMC475) on Expi293 cells transfected with human SIGLEC7 (Blue histogram) or Expi293 transfected with irrelevant protein (Red histogram).