

SEPTIN9 PAB

Septin9 Polyclonal Antibody

Cat. #: 21126

Gene Symbol: SEPTIN9

Description: Anti-Septin9 Rabbit Polyclonal Antibody

Background: Septin9 belongs to the septin family. It is essential for pseudopod protrusion, tumor cell migration and invasion.

Immunogen: A synthetic peptide from the internal region of Septin9 isoform of human origin.

Applications: ELISA, WB, IHC, IP

Recommended Dilutions:

ELISA: 1:100–1:5000

WB: 1:100–1:1000

IHC: 1:50–1:100

Concentration: 0.2 mg/ml

Host Species: Rabbit

Format: Liquid

Clonality: Polyclonal

Purity: Purified from serum

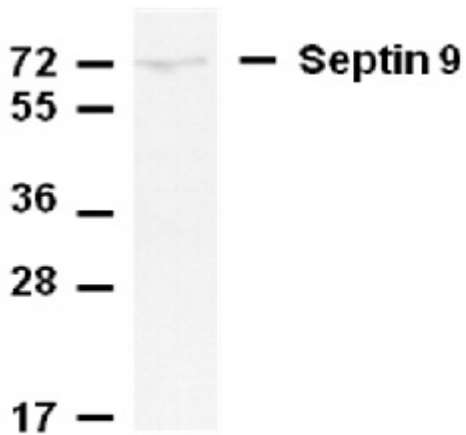
Preservative: No

Constituents: PBS (without Mg^{2+} and Ca^{2+}), pH 7.4, 150 mM NaCl, 50% glycerol

Species Reactivity: Anti-Septin-9 antibody recognizes Septin-9 of vertebrates.

Storage Conditions: Store at $-20^{\circ}C$. Avoid repeated freezing and thawing

Western blot:



WB: anti-Septin 9 pAb

Whole-cell lysate of HEK293T cells was used for western blot with the polyclonal Anti-Septin9 antibody (Cat # 21126).