

SCF (DM194) RABBIT MAB

目录: 28537

产品名称: SCF(DM194) Rabbit Monoclonal Antibody

基因符号: DCUA; DFNA69;FPH2;FPHH; Kitl;KL-1;MGF;SCF; SF;SHEP7;SLF

描述: SCF antibody(DM194) Rabbit Monoclonal Antibody

背景: This gene encodes the ligand of the tyrosine-kinase receptor encoded by the KIT locus. This ligand is a pleiotropic factor that acts in utero in germ cell and neural cell development; and hematopoiesis; all believed to reflect a role in cell migration. In adults; it functions pleiotropically; while mostly noted for its continued requirement in hematopoiesis. Two transcript variants encoding different isoforms have been found for this gene.

经过测试的应用: ELISA; Flow Cyt

推荐稀释度: ELISA 1:5000-10000; Flow Cyt 1:100

种属反应性: Rabbit

亚型: Rabbit IgG

纯化: Purified from cell culture supernatant by affinity chromatography

种属反应性: Human SCF

成分: Lyophilized from sterile PBS, pH 7.4. 5 % – 8% trehalose is added as protectants before lyophilization.

储存和运输: Store at -20°C to -80°C for 12 months in lyophilized form. After reconstitution, if not intended for use within a month, aliquot and store at -80°C (Avoid repeated freezing and thawing).

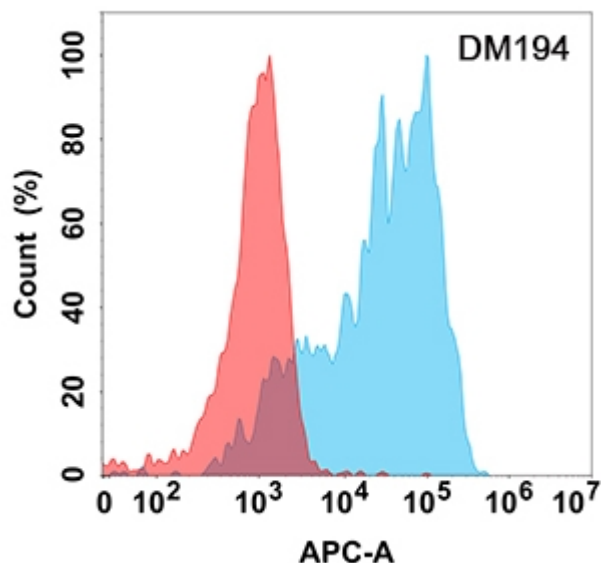


Figure 1. Flow cytometry analysis with SCF (DM194) on Expi293 cells transfected with human SCF (Blue histogram) or Expi293 transfected with irrelevant protein (Red histogram).