

SAR1 MAB

Sar1 Monoclonal Antibody

Cat. #: 26021

Gene Symbol: SAR1

Description: Anti-Sar1 Mouse Monoclonal Antibody

Background: Small GTPases are a super-family of cellular signaling regulators. Sar1 is a member of these small GTPases. Sar1 functions as a molecular switch to control protein-protein and protein-lipid interactions that direct vesicle budding from the ER.

Immunogen: Recombinant full length Sar1a protein.

Applications: ELISA, WB, IHC

Recommended Dilutions:

ELISA: 1:100-1:5000

WB: 1:100-1:2000

IHC: 1:50-1:100

Concentration: 1 mg/ml

Host Species: Mouse

Format: Liquid

Clonality: Monoclonal

Isotype: IgG

Purity: Purified from ascites

Preservative: No

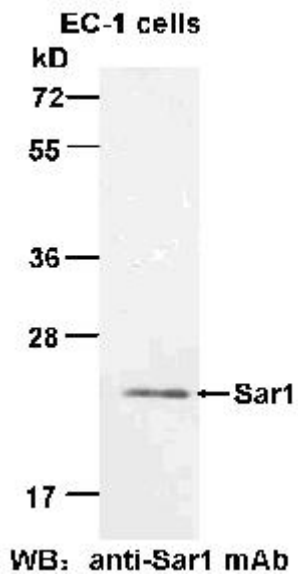
Constituents: PBS (without Mg^{2+} and Ca^{2+}), pH 7.4, 150 mM NaCl, 50% glycerol

Species Reactivity: Sar1 antibody recognizes Sar1 proteins of vertebrates.

Storage Conditions: Store at $-20^{\circ}C$. Avoid repeated freezing and thawing

Western blot:

Western blot:



Western blot analysis of Sar1 proteins. EC-1 whole-cell lysate was used for Western blots with anti-Sar1 mouse monoclonal antibody (Cat# 26021).