

SAR1-GTP

Anti-Sar1GTP Mouse Monoclonal Antibody

Cat. #: 26916

Size: 30 μ L

Gene Symbol: SAR1

Description: Anti-Sar1-GTP Mouse Monoclonal Antibody

Background: Small GTPases are a super-family of cellular signaling regulators. Sar1 is a member of these small GTPases. Sar1 functions as a molecular switch to control protein-protein and protein-lipid interactions that direct vesicle budding from the ER.

Immunogen: Recombinant full length protein of active Sar1a.

Applications: IP, IHC and IF (**Not applicable for WB since SDS denatures Sar1 GTPase**)

Published Applications: [IP, IHC and IF - Click for Details](#)

Recommended Dilutions:

IP: 1 μ g for 1~2 mg total cellular proteins

IHC, IF: 1:50-1:250

Concentration: 1 mg/ml

Host Species: Mouse

Format: Liquid

Clonality: Monoclonal

Isotype: IgG

Purity: Purified from ascites

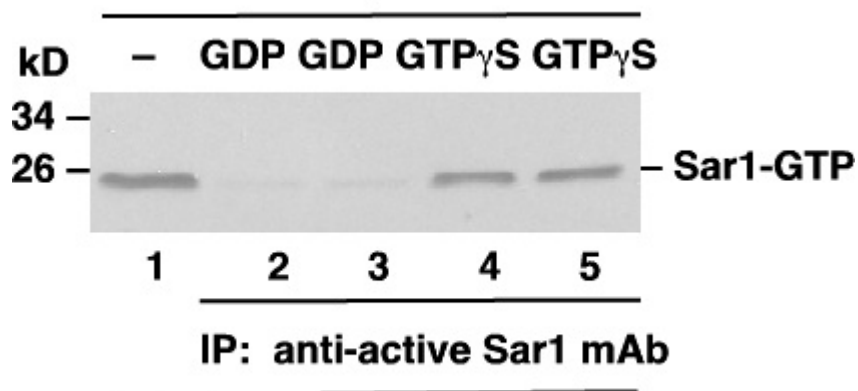
Preservative: No

Constituents: PBS (without Mg^{2+} and Ca^{2+}), pH 7.4, 150 mM NaCl, 50% glycerol

Species Reactivity: Anti-active Sar1 antibody recognizes active Sar1 of vertebrates.

Storage Conditions: Store at $-20^{\circ}C$. Avoid repeated freezing and thawing

Immunoprecipitation/Western blot: Sar1 protein



WB: anti-Sar1 pAb

Sar1 Activation Assay.

Purified Sar1 proteins were loaded with GDP (lanes 2 and 3) or GTP γ S (lanes 4 and 5). Immunoprecipitation was done with the anti-active Sar1 monoclonal antibody (Cat. No. 26916). Immunoblot was with an anti-Sar1 rabbit polyclonal antibody (Cat. No. 21090).