

## CD40L MAB (RUPLIZUMAB)

目录: 28051

产品名称: CD40L (Ruplizumab) Monoclonal Antibody

基因符号: CD40LG;D154;D40L;IGM1;GM;MD3;-BAM;NFSF5;RAP;p39

描述: CD40L (ruplizumab) Monoclonal Antibody

背景: Research grade biosimilar. Not for use in therapeutic or diagnostic procedures for humans or animals.

经过测试的应用: ELISA; Flow Cyt

推荐稀释度: ELISA 1:5000-10000; Flow Cyt 1:100

种属反应性: Humanized

亚型: IgG1

纯化: Purified from cell culture supernatant by affinity chromatography

种属反应性: Human CD40 Ligand

成分: Lyophilized from sterile PBS, pH 7.4. 5% - 8% trehalose is added as protectants before lyophilization.

储存和运输: Store at -20°C to -80°C for 12 months in lyophilized form. After reconstitution, if not intended for use within a month, aliquot and store at -80°C (Avoid repeated freezing and thawing).

### Anti-CD40L (ruplizumab biosimilar) mAb ELISA

0.2 µg of Human CD40 Ligand, hFc Tagged protein per well

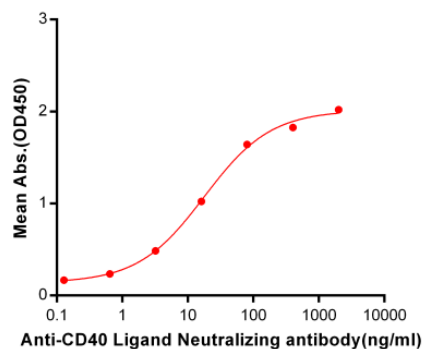


Figure 1. ELISA plate pre-coated by 2 µg/ml (100 µl/well) Human CD40L, hFc tagged protein (11241) can bind CD40L Neutralizing antibody (28051) in a linear range of 0.64-400 ng/ml. In order to specifically detect 28051, mouse human Fab-specific antibody was used as detection antibody.

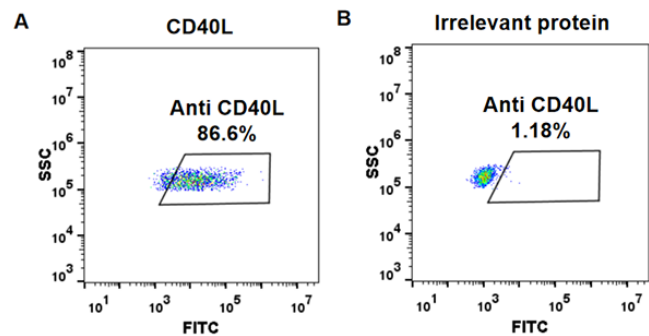


Figure 2. HEK293 cell line transfected with irrelevant protein (B) and human CD40L (A) were surface stained with CD40L mAb 1 µg/ml (ruplizumab) followed by Alexa 488-conjugated human IgG secondary antibody.