

ROR1 (DM149) RABBIT MAB

目录: 28493

产品名称: ROR1(DM149) Rabbit Monoclonal Antibody

基因符号: ROR1;NTRKR1

描述: ROR1 antibody(DM149) Rabbit Monoclonal Antibody

背景: This gene encodes a receptor tyrosine kinase-like orphan receptor that modulates neurite growth in the central nervous system. The encoded protein is a glycosylated type I membrane protein that belongs to the ROR subfamily of cell surface receptors. It is a pseudokinase that lacks catalytic activity and may interact with the non-canonical Wnt signalling pathway. This gene is highly expressed during early embryonic development but expressed at very low levels in adult tissues. Increased expression of this gene is associated with B-cell chronic lymphocytic leukaemia. Alternative splicing results in multiple transcript variants encoding different isoforms. [provided by RefSeq; Jun 2012]

经过测试的应用: ELISA; Flow Cyt

推荐稀释度: ELISA 1:5000-10000; Flow Cyt 1:100

种属反应性: Rabbit

亚型: Rabbit IgG

纯化: Purified from cell culture supernatant by affinity chromatography

种属反应性: Human ROR1

成分: Lyophilized from sterile PBS, pH 7.4. 5% – 8% trehalose is added as protectants before lyophilization.

储存和运输: Store at -20°C to -80°C for 12 months in lyophilized form. After reconstitution, if not intended for use within a month, aliquot and store at -80°C (Avoid repeated freezing and thawing).

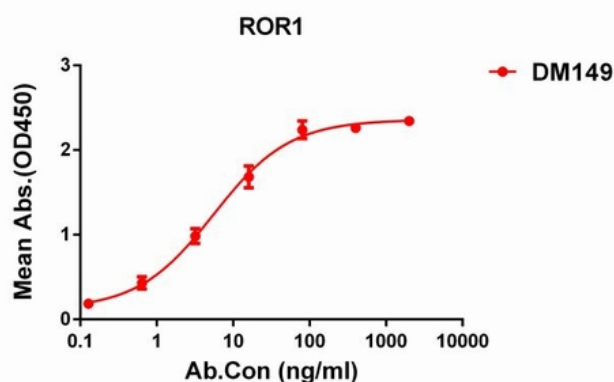


Figure 1. ELISA plate pre-coated by 1 µg/ml (100 µl/well) Human ROR1 protein, His tagged protein 11267 can bind Rabbit ROR1 monoclonal antibody (clone: DM149) in a linear range of 1-50 ng/ml.

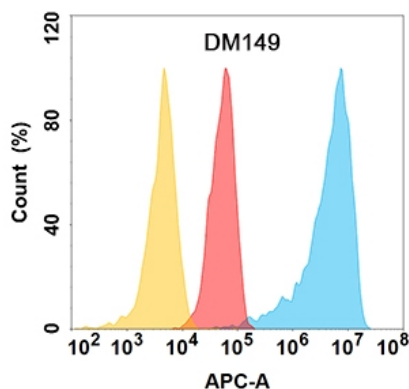


Figure 2. ROR1 protein is highly expressed on the surface of Expi293 cell membrane. Flow cytometry analysis with ROR1 (DM149) on Expi293 cells transfected with human ROR1 (Blue histogram) or Expi293 transfected with irrelevant protein (Red histogram), and Isotype antibody on Expi293 transfected with irrelevant protein (Orange histogram).