

## RIC-8A MAB

### Ric-8A

**Cat. #:** 26071

**Gene Symbol:** RIC8A

**Description:** Anti-Ric8A Mouse Monoclonal Antibody

**Background:** Ric-8A (Resistance to Inhibitors of Cholinesterase-8A) interacts with  $G\alpha_o$ ,  $G\alpha_i$ ,  $G\alpha_q$  and  $G\alpha_{13}$ , but not  $G\alpha_s$  proteins. Mammalian Ric-8A protein is a guanine nucleotide exchange factor for  $G\alpha_q$ ,  $G\alpha_i$ ,  $G\alpha_o$ ,  $G\alpha_{12}$ ,  $G\alpha_{13}$ , but not for  $G\alpha_s$ . *C. elegans* Ric8 (also named Synembryn) is required for proper asymmetric division of 1-cell-stage embryos. Ric8 is required for the generation of substantial pulling forces on astral microtubules.

**Immunogen:** A synthetic peptide near the C-terminus of Ric-8A, human origin.

**Applications:** ELISA, WB, IHC, IP

**Recommended Dilutions:**

ELISA: 1:100–1:5000

WB: 1:100–1:2000

IHC: 1:50–1:100

**Concentration:** 1 mg/ml

**Host Species:** Mouse

**Format:** Liquid

**Clonality:** Monoclonal

**Isotype:** IgG

**Purity:** Purified from ascites

**Preservative:** No

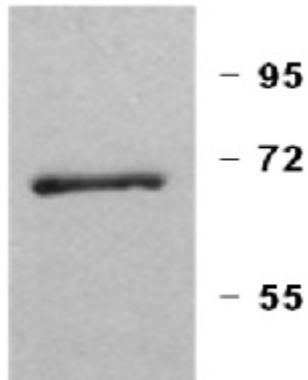
**Constituents:** PBS (without  $Mg^{2+}$  and  $Ca^{2+}$ ), pH 7.4, 150 mM NaCl, 50% glycerol

**Species Reactivity:** Ric-8A antibody recognizes Ric-8A from vertebrates.

**Storage Conditions:** Store at  $-20^{\circ}C$ . Avoid repeated freezing and thawing

## Western blot:

### HeLa Cells



### WB: Anti-Ric-8A mAb

Western blot analysis of Ric-8A proteins. Whole-cell lysate of HeLa cells was blotted with anti Ric-8A monoclonal antibody (Cat. #26071).