

**RHOA PAB****RhoA Polyclonal Antibody**

货号: 21017

基因符号: RHOA

描述: RhoA Rabbit Polyclonal Antibody

背景: Small GTPases are a super-family of cellular signaling regulators. RhoA belongs to the Rho sub-family of GTPases. Rho proteins play critical roles in many actin cytoskeleton- dependent processes including platelet aggregation, cell motility, contraction, and cytokinesis. It regulates the formation of stress fibers and focal adhesions in fibroblasts and Ca<sup>2+</sup> sensitivity of smooth muscle contraction.

免疫原: A synthetic peptide from the C-terminal region of RhoA.

经过测试的应用: ELISA, WB, IHC, IP

推荐稀释度:

ELISA: 1:100-1:5000

WB: 1:100-1:2000

IHC: 1:10-1:1000

浓度: 0.2 mg/ml

种属反应性: Rabbit

形式: Liquid

克隆性: Polyclonal

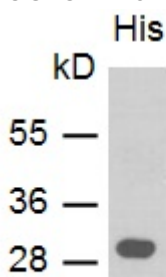
纯化: Purified from serum

**Preservative:** No

成分: PBS (without Mg<sup>2+</sup> and Ca<sup>2+</sup>), pH 7.4, 150 mM NaCl, 51% glycerol Species

种属反应性: RhoA antibody recognizes RhoA from vertebrates.

储存条件: Store at -20°C. Avoid repeated freezing and thawing

**Western blot:**

---

WB: anti-RhoA pAb

FOR RESEARCH USE ONLY. NOT FOR DIAGNOSTIC APPLICATIONS

## **Western blot analysis of RhoA proteins.**

Purified recombinant His-RhoA protein was used for western blot with the anti RhoA rabbit polyclonal antibody (货号 21017).