

## CDC42+RAC1+RHOA PAB

### Cdc42/Rac1/RhoA Polyclonal Antibody

货号: 21035

基因符号: CDC42+RAC1+RHOA

描述: Cdc42+Rac1+RhoA Rabbit Polyclonal Antibody

背景: Small GTPases are a super-family of cellular signaling regulators. The Rho sub-family GTPases regulate cell motility, cell division, and gene transcription.

免疫原: A synthetic peptide from the N-terminal region common among Cdc42, Rac1, and RhoA.

经过测试的应用: ELISA, WB, IHC

推荐稀释度: ELISA 1:100-1:5000

WB 1:100-1:2000

IHC 1:100-1:1000

浓度: 0.2 mg/ml

种属反应性: Rabbit

形式: Liquid

克隆性: Polyclonal

亚型: IgG

纯化: Purified from serum

**Preservative:** No

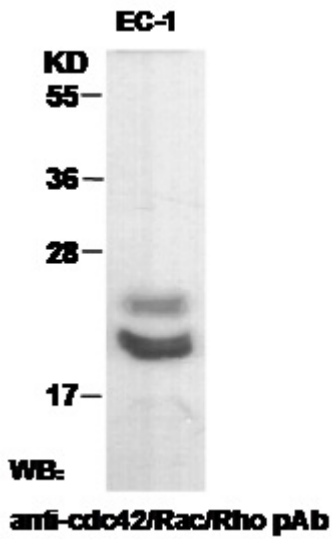
成分: PBS (without  $Mg^{2+}$  and  $Ca^{2+}$ ), pH 7.4, 150 mM NaCl, 50% glycerol

种属反应性: Rho family pan antibody recognizes Cdc42, Rac1, and RhoA from vertebrates.

储存条件: Store at  $-20^{\circ}C$ . Avoid repeated freezing and thawing

**Download Datasheet:** 

### Western blot:



EC-1 whole-cell lysate was used for Western blot with the polyclonal Rho family pan antibody (cat # 21035).