

RHOA MAB

RhoA Monoclonal Antibody

Cat. #: 26007

Gene Symbol: RHOA

Description: Anti-RhoA Mouse Monoclonal Antibody

Background: Small GTPases are a super-family of cellular signaling regulators. RhoA belongs to the Rho sub-family of GTPases. Rho proteins play critical roles in many actin cytoskeleton- dependent processes including platelet aggregation, cell motility, contraction, and cytokinesis. It regulates the formation of stress fibers and focal adhesions in fibroblasts and Ca²⁺ sensitivity of smooth muscle contraction.

Immunogen: : Recombinant full length protein of RhoA.

Applications: ELISA, WB, IHC

Recommended Dilutions: ELISA 1:1000-1:5000 WB 1:1000-1:2000

Concentration: 1 mg/ml

Host Species: Mouse

Format: Liquid

Clonality: Monoclonal

Isotype: IgG

Purity: Purified from ascites

Preservative: No

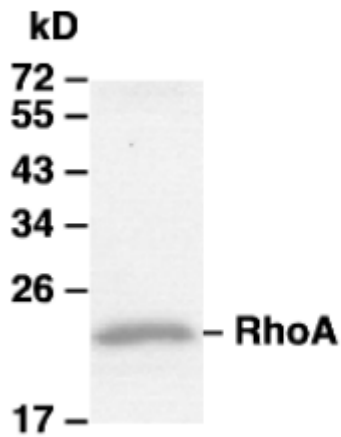
Constituents: : PBS (without Mg²⁺ and Ca²⁺), pH 7.4, 150 mM NaCl, 50% glycerol

Species Reactivity: RhoA antibody recognizes RhoA from vertebrates.

Storage Conditions: Store at -20°C. Avoid repeated freezing and thawing

Western Blot:

Western blot:



WB: anti-RhoA mAb

Western blot analysis of RhoA proteins. MEF whole-cell lysate was used for western blot with the anti-RhoA mouse monoclonal antibody (cat. # 26008).