

RHOA-GTP

RhoAGTP 小鼠单克隆抗体

货号: 26904

规格: 30 μ L

基因符号: RHOA

描述: RhoA-GTP 小鼠单克隆抗体

背景: Small GTPases are a super-family of cellular signaling regulators. RhoA belongs to the Rho sub-family of GTPases. Rho proteins play critical roles in many actin cytoskeleton- dependent processes including platelet aggregation, cell motility, contraction, and cytokinesis. It regulates the formation of stress fibers and focal adhesions in fibroblasts and

Ca²⁺ sensitivity of smooth muscle contraction.

免疫原: Recombinant full length protein of active RhoA

经过测试的应用: IP, IHC and IF (**Not applicable for WB since SDS denatures RhoA GTPase**)

引用文献的应用: **IF, IHC; Click for Details -** [Part 01](#) [Part 02](#)

推荐稀释度:

IP: 1 μ g for 1~2 mg total cellular proteins

IHC, IF: 1:50-1:250

浓度: 1 mg/ml

种属反应性: Mouse

形式: Liquid

克隆性: Monoclonal

亚型: IgG2b

纯化:: Purified from ascites

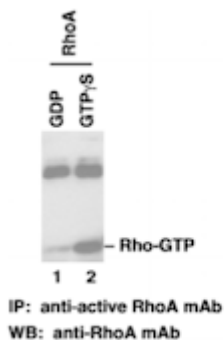
Preservative: No

成分: PBS (without Mg²⁺ and Ca²⁺), pH 7.4, 150 mM NaCl, 50% glycerol

种属反应性: RhoA monoclonal antibody recognizes active RhoA from vertebrates.

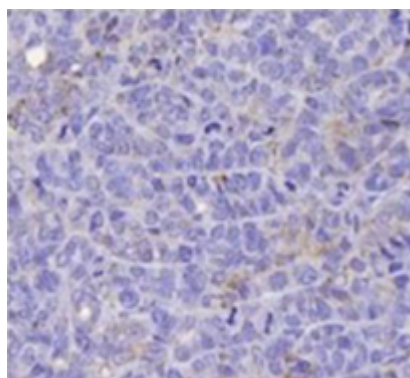
储存条件:: Store at -20°C. Avoid repeated freezing and thawing

Immunoprecipitation/Western blot:

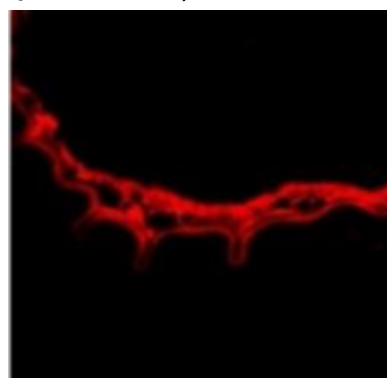


IP/WB Analysis of Active RhoA Protein.

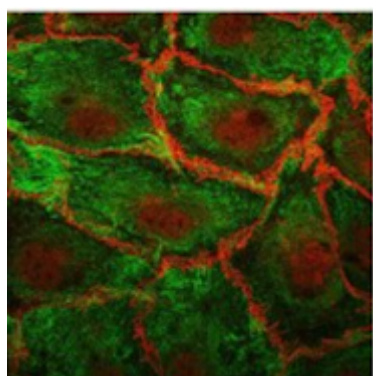
Purified recombinant RhoA proteins were loaded with GDP (lane 1) or GTP γ S (lane 2). These proteins were immunoprecipitated with RhoA-GTP monoclonal antibody (货号 26904). After SDS/PAGE, the membrane filter was probed with RhoA mouse monoclonal antibody (货号 26007).



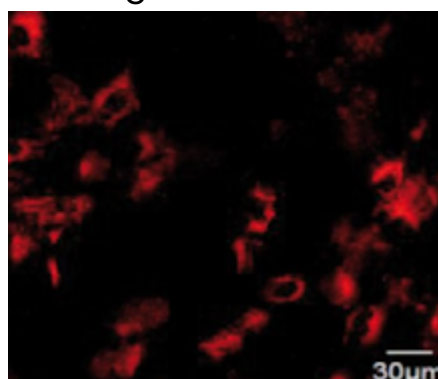
IHC staining for Ki67, Active RhoA -GTP, YAP1 and Myc in subcutaneous tumour sections



Immunofluorescence analysis of the attery sections was performed using RhoAGTP mAb as shown in red staining



Immunofluorescence assay of HLMECsi with RhoAGTP mAb, shown as green staining



Representative time-lapse fluorescence microscopy images of h-iNPCE cells during cell migration with RhoA-GTP (red)