

RHEB PAB

RheB Polyclonal Antibody

货号: 21098

基因符号: RHEB

描述: RheB Rabbit Polyclonal Antibody

背景: Small GTPases are a super-family of cellular signaling regulators. RheB is a member of the Ras-superfamily GTPases. RheB has been shown to interact with C-Raf, Mammalian target of rapamycin (mTOR), TSC2, Ataxia telangiectasia mutated (ATM), KIAA1303 and Ataxia telangiectasia and Rad3 related (ATR).

免疫原: A synthetic peptide from the C-terminal region of human RheB

经过测试的应用: ELISA, WB, IHC

推荐稀释度:

ELISA: 1:1000-1:5000

WB: 1:100-1:1000

IHC: 1:100-1:1000

浓度: 0.2 mg/ml

种属反应性: Rabbit

形式: Liquid

克隆性: Polyclonal

亚型: IgG

纯化:: Purified from serum

Preservative: No

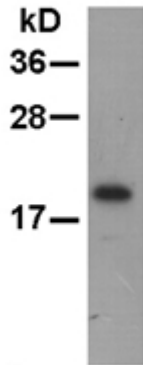
成分: PBS (without Mg^{2+} and Ca^{2+}), pH 7.4, 150 mM NaCl, 50% glycerol

种属反应性: RheB antibody recognizes RheB of vertebrates.

储存条件:: Store at $-20^{\circ}C$. Avoid repeated freezing and thawing

Western blot:

HEK-293T



pAb: anti-RheB pAb

Western blot analysis of RheB proteins. Whole-cell lysate of HEK-293T cells was used for western blot with the polyclonal anti RheB antibody (Cat # 21098).