

RHEB-GTP

产品名称: Rheb-GTP 小鼠单抗

货号: 26910

规格: 30 μ L

基因符号: RHEB

描述: Rheb-GTP 单抗

背景: Small GTPases are a super-family of cellular signaling regulators. Rheb is a member of the Ras-superfamily GTPases. Rheb has been shown to interact with C-Raf, Mammalian target of rapamycin (mTOR), TSC2, Ataxia telangiectasia mutated (ATM), KIAA1303 and Ataxia telangiectasia and Rad3 related (ATR).

免疫原: Recombinant full-length protein of active Rheb.

经过测试的应用: IP, IHC, IF

推荐稀释比: IP: 1 μ g for 1~2 mg total cellular proteins IHC, IF: 1:50-1:250

Concentration: 1 mg/ml

种属反应性: Mouse

形式: Liquid

克隆性: Monoclonal

亚型: IgM

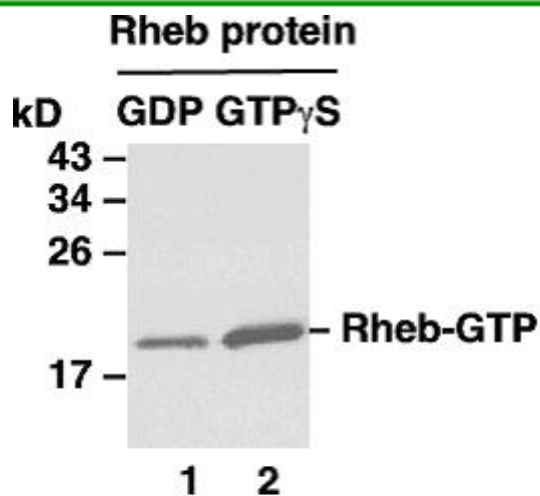
纯化: Purified from ascites

Preservative: No

Constituents: PBS (without Mg^{2+} and Ca^{2+}), pH 7.4, 150 mM NaCl, 50% glycerol

种属反应性: Rheb-GTP monoclonal antibody recognizes active Rheb of vertebrates.

储存条件: Store at $-20^{\circ}C$. Avoid freeze/thaw cycles



IP: anti-active Rheb mAb

免疫沉淀/蛋白质印迹: **WB: anti-Rheb pAb** Rheb activation assay. Purified Rheb proteins were immunoprecipitated after treated with GDP (lane 1) or GTP_γS (lane 2). Immunoprecipitation was done with the anti-Rheb-GTP monoclonal antibody (货号: 26910). Immunoblot was with an anti-Rheb 兔多抗 (货号: 21098).