

RET(C634Y)**RET(C634Y)**

货号: 26146

基因符号: RET, PTC, CDHF12, CAHF16, HSCRI, MEN2A, MEN2B

描述: RET(C634Y) 小鼠单克隆抗体

背景: RET protein is encoded by the RET proto- oncogene. It is a receptor tyrosine kinase. RET loss of function mutations are associated with the development of Hirschsprung's disease, while gain of function mutations are associated with development of various types of human cancer, including medullary thyroid carcinoma, multiple endocrine neoplasia type 2A and 2B, pheochromocytoma and parathyroid hyperplasia.

免疫原: A synthetic peptide from the internal region of RET which includes the mutation of C634Y, human origin.

经过测试的应用: ELISA, WB, IHC

推荐稀释度:

ELISA: 1:1000-1:2000

WB: 1:500-1:1000

IHC: 1:50-1:100

浓度: 0.5 mg/ml

种属反应性: Mouse

形式: Liquid

克隆性: Monoclonal

亚型: IgG

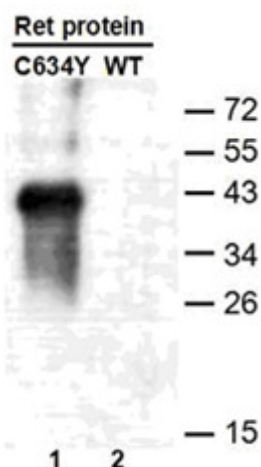
纯化:: Purified from ascites

Preservative: No

成分: PBS (without Mg²⁺ and Ca²⁺), pH 7.4, 150 mM NaCl, 50% glycerol

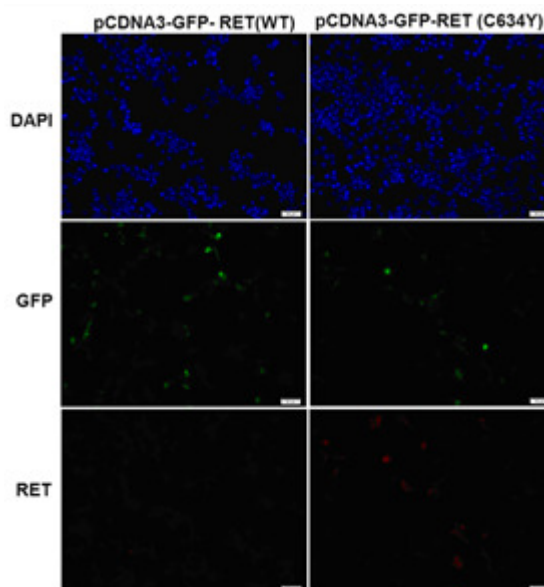
种属反应性: Recognizes C634Y mutant, but not wild type RET of vertebrates.

储存条件:: Store at -20°C. Avoid repeated freezing and thawing



Western blot: WB: anti-Ret (C634Y) mAb

Western blot analysis of recombinant RET(C634Y) and wild type proteins. Purified His-tagged RET(C634Y) protein (lane1) and corresponding wild type protein (lane2) were blotted with RET(C634Y) monoclonal antibody (货号26146).



Immunoprecipitation/Western blot:

Immunofluorescence of cells expressing RET proteins with RET(C634Y) antibody. HEK293T cells were transfected with pCDNA3-GFP-RET (WT) plasmid (left column) or pCDNA3-GFP-RET(C634Y) plasmid (right column), then fixed and stained with RET(C634Y) monoclonal antibody (货号26146).