

RAS(G12D)

Ras(G12D)

货号: 26036

基因符号: RAS(G12D)

描述: Ras(G12D) 小鼠单克隆抗体

背景: Ras (G12D) is one type of Ras missense mutations at the codon 12. Ras protein is a membrane-associated GTPase that regulates cell proliferation, differentiation, and survival. Ras G12D mutation results in decreased GTPase activity and constitutive signaling. This mutation is found in many types of human cancers.

免疫原: A synthetic peptide from the internal region of Ras which includes the mutation of G12D, human origin

经过测试的应用: ELISA, WB, IF, IHC

推荐稀释度:

ELISA: 1:100-1:3000

WB: 1:100-1:1000

IF: 1:50-1:100

IHC: 1:50-1:100

浓度: 1 mg/ml

种属反应性: **Mouse**

形式: Liquid

克隆性: Monoclonal

亚型: IgG1, IgG2a, IgG2b

纯化:: Purified from ascites

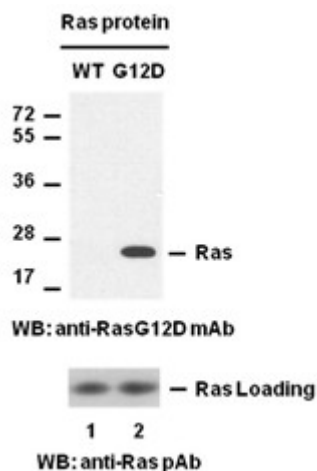
Preservative: No

成分: PBS (without Mg^{2+} and Ca^{2+}), pH 7.4, 150 mM NaCl, 50% glycerol

种属反应性: Ras(G12D) antibody recognizes Ras(G12D) proteins of vertebrates

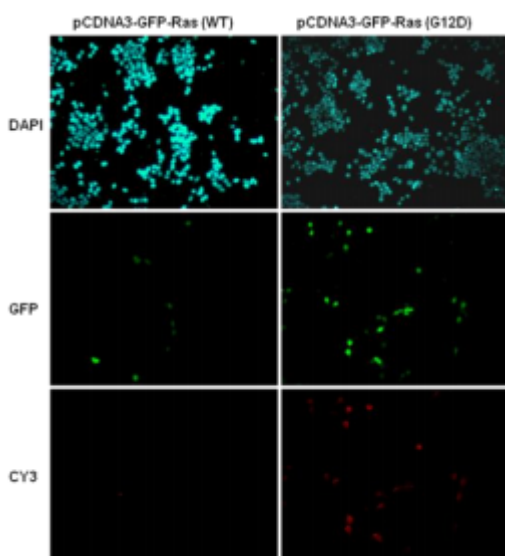
储存条件:: Store at $-20^{\circ}C$. Avoid repeated freezing and thawing

Western blot:



Western blot analysis of recombinant Ras WT and G12D proteins. Equal amounts of purified Ras WT (lane 1, Cat # 10172) and G12D (lane 2, Cat # 10154) proteins were loaded and blotted with Ras G12D mouse monoclonal antibody (Cat # 26036) (Top panel). Input control (bottom panel) was blotted with rabbit polyclonal Ras antibody (Cat # 21021).

Immunofluorescence:



Immunofluorescence of cells expressing RAS proteins with RAS (G12D) antibody.

HEK293T cells were transfected with pCDNA3-GFP-Ras(WT) plasmid (left column) or pCDNA3-GFP Ras(G12D) plasmid (right column), then fixed and stained with Ras(G12D) monoclonal antibody (货号 26036).