

RAS(A146T)

RAS(A146T)

Cat. #: 26261

Gene Symbol: H-Ras; K-Ras; N-Ras

Description: Anti-RAS(A146T) Mouse Monoclonal Antibody

Background: The A146T mutation of KRas results in an amino acid substitution at position 146, from an alanine to a threonine. KRAS encodes a protein that is a member of the small GTPase superfamily. Ras A146T mutation results in decreased GTPase activity and constitutive signaling. It can be found in many tumors, such as lung adenocarcinoma, mucinous adenoma, ductal carcinoma of the pancreas and colorectal carcinoma.

Immunogen: A synthetic peptide from the internal region of Ras which includes the mutation of A146T, human origin.

Applications: ELISA, WB, IHC

Recommended Dilutions:

ELISA: 1:1000-1:5000

WB: 1:500-1:1000

IHC: 1:50-1:100

Concentration: 1 mg/ml

Host Species: Mouse

Format: Liquid

Clonality: Monoclonal

Isotype: IgG

Purity: Purified from ascites

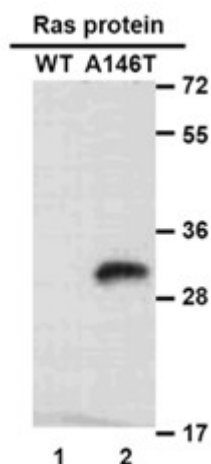
Preservative: No

Constituents: PBS (without Mg²⁺ and Ca²⁺), pH 7.4, 150 mM NaCl, 50% glycerol

Species Reactivity: Recognizes A146T mutant, but not wild type RAS of vertebrates.

Storage Conditions: Store at -20°C. Avoid repeated freezing and thawing

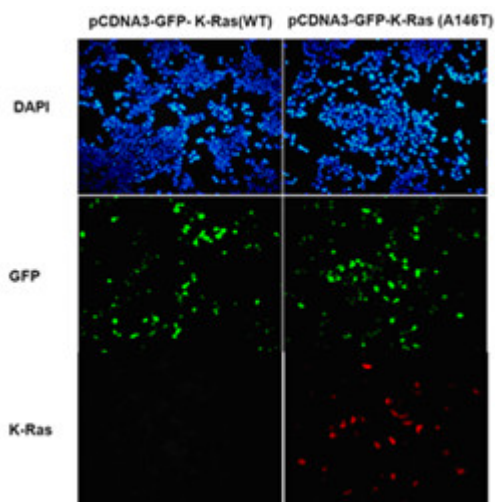
Western blot:



WB: anti-Ras (A146T) mAb

Western blot analysis of recombinant HRAS(A146T) and wild type proteins. Purified His-tagged RAS(A146T) protein (lane 2) and corresponding wild type protein (lane 1) were blotted with Anti-RAS(A146T) monoclonal antibody (Cat. #26261).

Immunofluorescence:



Immunofluorescence of cells expressing HRas proteins with anti-HRAS(A146T) antibody. HEK293T cells were transfected with pCDNA3-GFP-HRas (WT) plasmid (left column) or pCDNA3-GFP-HRAS(A146T) plasmid (right column), then fixed and stained with anti-HRAS(A146T) monoclonal antibody (Cat. #26261).