

RAN MAB

Ran Monoclonal Antibody

货号: 26020

基因符号: RAN

描述: Ran-小鼠单克隆抗体

背景: Ran (Ras-related nuclear protein) is a member of the Ras-superfamily GTPases. Ran is involved in the transport of proteins across the nuclear envelope, as well as in microtubule organization during mitosis.

免疫原: Recombinant full length protein of Ran

经过测试的应用: ELISA, WB, IP, IHC

推荐稀释度: ELISA: 1:1000-1:5000

WB: 1:100-1:2000

IP: 1 µg for 1~2 mg total cellular proteins

IHC: 1:100 dilution

浓度: 1 mg/ml

种属反应性: Mouse

形式: Liquid

克隆性: Monoclonal

亚型: IgG

纯化: Purified from ascites

Preservative: No

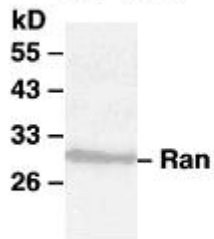
成分: PBS (without Mg^{2+} and Ca^{2+}), pH 7.4, 150 mM NaCl, 50% glycerol

种属反应性: Ran antibody recognizes Ran of vertebrates.

储存条件: Store at $-20^{\circ}C$. Avoid repeated freezing and thawing

Western blot:

Western blot:
MEF cells



WB: anti-Ran mAb

Western blot analysis of Ran proteins. Whole-cell lysate of MEF cells was used for western blots with the monoclonal Ran antibody (cat. # 26020).