

RAN-GTP

Anti-RanGTP Mouse Monoclonal Antibody

Cat. #: 26915

Size: 30 μ L

Gene Symbol: RAN

Description: Anti-Ran-GTP Mouse Monoclonal Antibody

Background: Ran (Ras-related nuclear protein) is a member of the Ras-superfamily GTPases. Ran is involved in the transport of proteins across the nuclear envelope, as well as in microtubule organization during mitosis.

Immunogen: Recombinant full length protein of active Ran.

Applications: IP, IHC and IF (**Not applicable for WB since SDS denatures Ran GTPase**)

Published Applications: [IP, IHC and IF - Click for Details](#)

Recommended Dilutions:

IP: 1 μ g for 1~2 mg total cellular proteins

IHC, IF: 1:50-1:250

Concentration: 1 mg/ml

Host Species: Mouse

Format: Liquid

Clonality: Monoclonal

Isotype: IgG

Purity: Purified from ascites

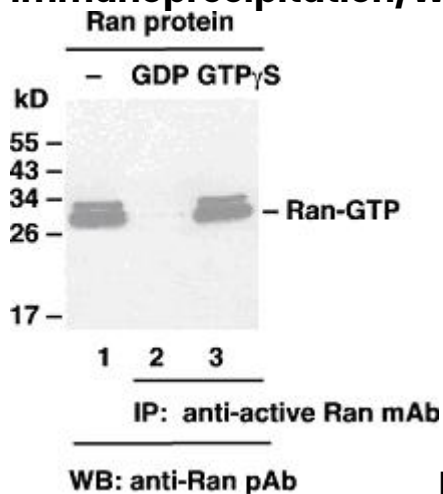
Preservative: No

Constituents: PBS (without Mg^{2+} and Ca^{2+}), pH 7.4, 150 mM NaCl, 50% glycerol

Species Reactivity: Anti-Ran-GTP monoclonal antibody recognizes active Ran of vertebrates.

Storage Conditions: Store at $-20^{\circ}C$. Avoid freeze/thaw cycles

Immunoprecipitation/Western blot:



Ran Activation Assay.

Purified Ran proteins were loaded as a control (lanes 1) or immunoprecipitated after treated with GDP (lane 2) or GTP γ S (lane 3). Immunoprecipitation was done with the anti-Ran-GTP monoclonal antibody (Cat. No. 26915). Immunoblot was with an anti-Ran polyclonal antibody.