

RALB PROTEIN

RalB Protein

Cat. #: 10169

Product Name: RalB Protein

Synonyms: v-ral simian leukemia viral oncogene homolog B

Source: Human, recombinant full length, His6-tag

Expression Host Species: E. coli

Molecular Weight: 23 kDa

Purity: >95% by SDS-PAGE

Introduction: The Ras-like small G proteins, RalA/B, are important components of Ras signaling pathways, implicated in the initiation and maintenance of tumorigenic transformation, as well as vesicle transport, apoptosis, transcription, cell migration, and cell proliferation.

Amino Acid Sequence (1-206)

**MAANKSKGQSSLALHKVIMVGGVGGKSALT LQFM YDEFV EYPTKADSYRKKVVL DGEEVQIDIL
DTAGQEDYAAIRDNYFRSGEGFLLVFSITEHESFTATAEFREQILRVKAEEDKIPLL VVGNKSDLEE
RRQVPVEEARSKAEEWGVQYVETSAKTRANVDKVF DLMREIRTKKMSENKDKNGKSSKNKKSFKERCCLL**

Properties

Physical Appearance (form): Dissolved in 20mM Tris-HCl, pH8.0, 150mM NaCl.

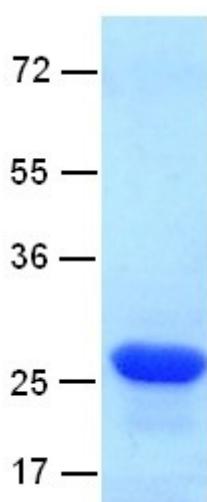
Physical Appearance (form): White or clear

Concentration: 1 mg/mL

Storage: -80°C

Preparation Instructions:

Centrifuge the vial before open the cap and reconstitute in water. Adding of 10 mM β -mercaptoethanol or 1 mM DTT into the solution to protect the protein is recommended and using of non-ionic detergents such as n-Dodecyl β -D-maltoside (DoDM) or polyethylene detergents (e.g. C12E10) also help to stabilize the protein. Avoid repeated freezing and thawing after reconstitution. The purity of His-tagged RalB was determined by SDS- PAGE and Coomassie Brilliant Blue Staining.



References:

1. Chien, Y. et al., Cell 127: 157-170, 2006.
2. Hsieh, C.-L. et al., Somat. Cell Molec. Genet. 16: 407-410, 1990