

RALA PAB

RaIA Polyclonal Antibody

货号: 21034

基因符号: RALA

描述: RaIA Rabbit Polyclonal Antibody

背景: The Ras-like small G proteins, RaIA/B, are important components of Ras signaling pathways, implicated in the initiation and maintenance of tumorigenic transformation, as well as vesicle transport, apoptosis, transcription, cell migration, and cell proliferation.

免疫原: A synthetic peptide from the internal region of RaIA protein

经过测试的应用: ELISA, WB, IHC

推荐稀释度: ELISA 1:100-1:5000

WB 1:100-1:2000

IHC 1:100-1:1000

浓度: 0.2 mg/ml

种属反应性: Rabbit

形式: Liquid

克隆性: Polyclonal

亚型: IgG

纯化: Purified from serum

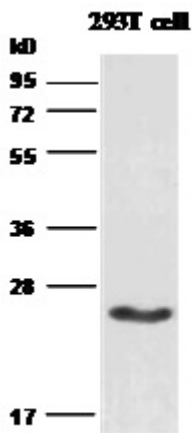
Preservative: No

成分: PBS (without Mg^{2+} and Ca^{2+}), pH 7.4, 150 mM NaCl, 50% glycerol

种属反应性: RaIA antibody recognizes RaIA from vertebrates.

储存条件: Store at $-20^{\circ}C$. Avoid repeated freezing and thawing

Western blot:



WB: anti-RalA pAb

Western blot analysis of RalA proteins. HEK-293T cell lysate was used for Western blot with anti RalA polyclonal antibody (cat # 21034).