

RAL PAB**Ral Polyclonal Antibody**

货号: 21150

基因符号: RAL

描述: Ral Rabbit Polyclonal Antibody

背景: The Ras-like small G proteins, RalA/B, are important components of Ras signaling pathways, implicated in the initiation and maintenance of tumorigenic transformation, as well as vesicle transport, apoptosis, transcription, cell migration, and cell proliferation.

免疫原: Two synthetic peptides from the internal regions of RalA and RalB proteins.

经过测试的应用: ELISA, WB, IHC, IP

推荐稀释度:

ELISA: 1:100-1:5000

WB: 1:100-1:2000

IHC: 1:100-1:1000

浓度: 0.2 mg/ml

种属反应性: Rabbit

形式: Liquid

克隆性: Polyclonal

亚型: IgG

纯化:: Purified from serum

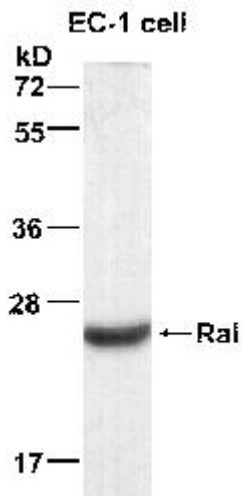
Preservative: No

成分: PBS (without Mg^{2+} and Ca^{2+}), pH 7.4, 150 mM NaCl, 50% glycerol

种属反应性: Ral antibody recognizes RalA and RalB from vertebrates.

储存条件:: Store at $-20^{\circ}C$. Avoid repeated freezing and thawing

Western blot:



WB: anti-Rai pAb

EC-1 cell lysate was used for Western blot with anti RaiA polyclonal antibody (cat # 21150).