

## RAL-GTP

### RalGTP 小鼠单克隆抗体

货号: 26913

规格: 30  $\mu$ L

基因符号: Ral

描述: Ral-GTP 小鼠单克隆抗体

背景: The Ras-like small G proteins, RalA and RalB, are important components of Ras signaling pathways, implicated in the initiation and maintenance of tumorigenic transformation, as well as vesicle transport, apoptosis, transcription, cell migration, and cell proliferation.

免疫原: Recombinant full length protein of active RalB.

经过测试的应用: IP, IHC and IF (**Not applicable for WB since SDS denatures Ral GTPase**)

引用文献的应用: [IP, IHC and IF - Click for Details](#)

推荐稀释度:

IP: 1  $\mu$ g for 1~2 mg total cellular proteins

IHC, IF: 1:50-1:250

浓度: 1 mg/ml

种属反应性: Mouse

形式: Liquid

克隆性: Monoclonal

亚型: IgG

纯化:: Purified from ascites

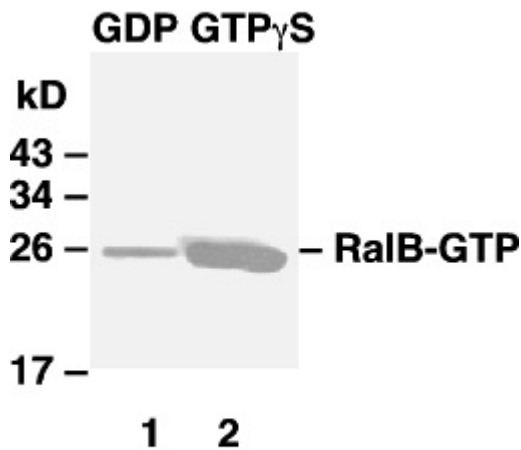
**Preservative:** No

成分: PBS (without  $Mg^{2+}$  and  $Ca^{2+}$ ), pH 7.4, 150 mM NaCl, 50% glycerol

种属反应性: Ral-GTP monoclonal antibody recognizes active RalA and RalB of vertebrates.

储存条件:: Store at  $-20^{\circ}C$ . Avoid repeated freezing and thawing

## Immunoprecipitation/Western blot: RalB protein



**IP: anti-active Ral mAb**

**WB: anti-RalB pAb**

**Ral activation assay.**

Purified RalB proteins were immunoprecipitated after treated with GDP (lane 1) or GTP $\gamma$ S (lane 2). Immunoprecipitation was done with the Ral-GTP monoclonal antibody (Cat. No. 26913). Immunoblot was with an RalB rabbit polyclonal antibody (Cat. No. 21033).