

RAC1 PAB

Rac1 Polyclonal Antibody

货号: 21003

基因符号: RAC1

描述: Rac1 Rabbit Polyclonal Antibody

背景: Small GTPases are a super-family of cellular signaling regulators. Rac belongs to the Rho sub-family of GTPases that regulate cell motility, cell division, and gene transcription. GTP binding increases the activity of Rac, and the hydrolysis of GTP to GDP renders it inactive. GTP hydrolysis is aided by GTPase activating proteins (GAPs), while exchange of GDP for GTP is facilitated by guanine nucleotide exchange factors (GEFs).

免疫原: A synthetic peptide from a unique region of Rac1

经过测试的应用: ELISA, WB, IHC

推荐稀释度: ELISA 1:100-1:5000, WB 1:100-1:2000

浓度: 1 mg/ml

种属反应性: Rabbit

形式: Liquid

克隆性: Polyclonal

亚型: IgG

纯化: Purified from serum

Preservative: No

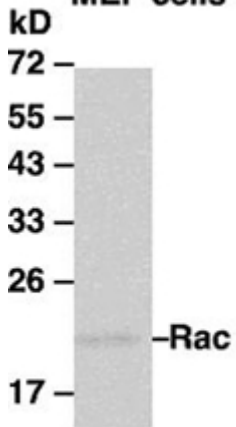
成分: PBS ((without Mg^{2+} and Ca^{2+}), pH 7.4, 150 mM NaCl, 50% glycerol

种属反应性: Rac1 antibody recognizes Rac1 from vertebrates.

储存条件: Store at $-20^{\circ}C$. Avoid repeated freezing and thawing

Western blot:

MEF cells



WB: anti-Rac pAb

Western blot analysis of Rac1 proteins. MEF whole-cell lysate was used for western blots with the polyclonal anti Rac1 antibody (cat # 21003).