

RAC1 MAB

Rac1 Monoclonal Antibody

Cat. #: 26005

Gene Symbol: RAC1

Description: Anti-Rac1 Mouse Monoclonal Antibody

Background: Small GTPases are a super-family of cellular signaling regulators. Rac belongs to the Rho sub-family of GTPases that regulate cell motility, cell division, and gene transcription. In mammals, there are three Rac genes: Rac1, Rac2 and Rac3. GTP binding increases the activity of Rac, and the hydrolysis of GTP to GDP renders it inactive. GTP hydrolysis is aided by GTPase activating proteins (GAPs), while exchange of GDP for GTP is facilitated by guanine nucleotide exchange factors (GEFs).

Immunogen: Recombinant full length protein of Rac1

Applications: ELISA, WB, IHC

Recommended Dilutions: ELISA 1:1000-1:5000 WB 1:1000-1:2000

Concentration: 1 mg/ml

Host Species: Mouse

Format: Liquid

Clonality: Monoclonal

Isotype: IgG

Purity: Purified from ascites

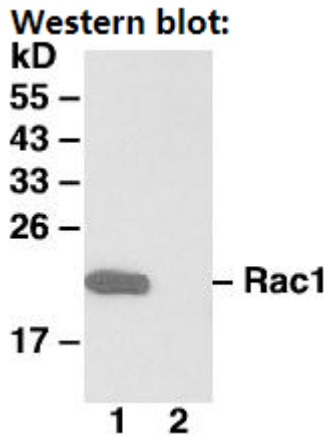
Preservative: No

Constituents: PBS (without Mg^{2+} and Ca^{2+}), pH 7.4, 150 mM NaCl, 50% glycerol

Species Reactivity: Rac1 antibody recognizes Rac1 from vertebrates.

Storage Conditions: Store at $-20^{\circ}C$. Avoid repeated freezing and thawing

Western blot:



Western blot analysis of Rac1 proteins. MEF whole-cell lysate was used for western blots. The monoclonal Anti-Rac1 antibody was pre-incubated without (lane 1) or with (lane 2) the antigen protein (Rac1) to show the specificity