

RAC-GTP**Rac1GTP 小鼠单克隆抗体**

货号: 26903

规格: 30 µL

基因符号: RAC1

描述: Rac1-GTP 小鼠单克隆抗体

背景: Small GTPases are a super-family of cellular signaling regulators. Rac belongs to the Rho sub-family of GTPases that regulate cell motility, cell division, and gene transcription. GTP binding increases the activity of Rac, and the hydrolysis of GTP to GDP renders it inactive. GTP hydrolysis is aided by GTPase activating proteins (GAPs), while exchange of GDP for GTP is facilitated by guanine nucleotide exchange factors (GEFs).

免疫原: Recombinant full length protein of active Rac1

经过测试的应用: IP, IHC and IF (**Not applicable for WB since SDS denatures the RacGTPase**)引用文献的应用: **IF, IHC Click for Details -** [Part 01](#) [Part 02](#)

推荐稀释度:

IP: 1 µg for 1~2 mg total cellular proteins

IHC, IF: 1:50-1:250

浓度: 1 mg/ml

种属反应性: Mouse

形式: Liquid

克隆性: Monoclonal

亚型: IgM

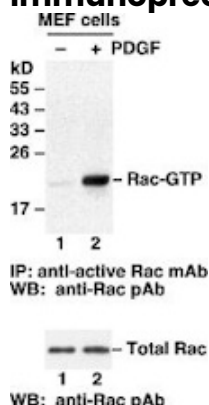
纯化:: Purified from ascites

成分: PBS (without Mg²⁺ and Ca²⁺), pH 7.4, 150 mM NaCl, 50% glycerol

种属反应性: Rac1-GTP monoclonal antibody recognizes active Rac1 from vertebrates.

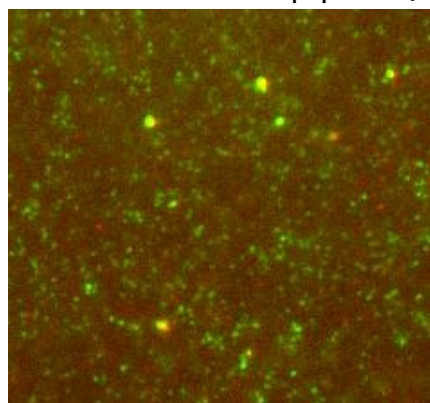
储存条件:: Store at -20°C. Avoid repeated freezing and thawing

Immunoprecipitation/Western blot:

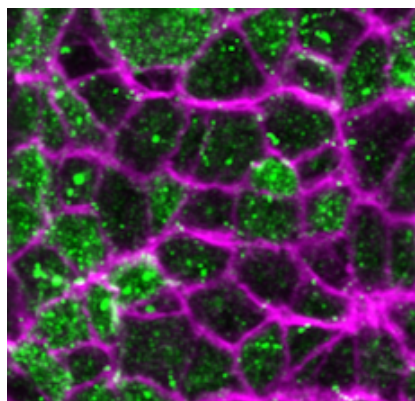


Rac Activation Assay.

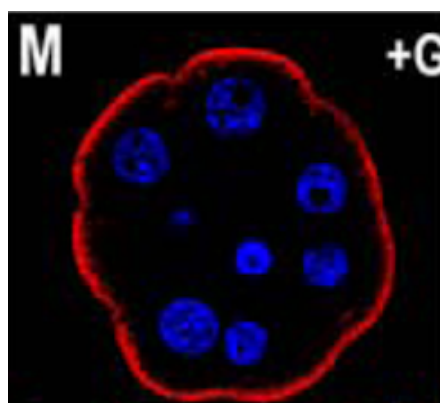
MEF cells were treated with (lane 2) or without (lane 1) PDGF. Cell lysates were incubated with an Rac-GTP monoclonal antibody (Cat # 26903) (top panel). The precipitated active Rac was immunoblotted with an Rac rabbit polyclonal antibody (Cat # 21003). The bottom panel shows the Western blot with Rac of the cell lysates used (5% of that used in the top panel).



Immunofluorescence for the active Rac using Rac1-GTP 小鼠单克隆抗体 [26903] shows Rac-GTP immunolabeling (green) in combination with cofilin (red) on brain tissue sections. The tissue sections were fixed with -20 °C methanol or 4% paraformaldehyde (fixation time 1 hr) and stained with antibody at 1:1000 in 0.1M Phosphate buffer with 0.3% Triton X, and 4% BSA for 24h at room temperature. Secondary antibodies were mouse AlexaFluor488 and rabbit AlexaFluor594 at 1:1000.



Immunofluorescence for the active Rac using Rac1-GTP 小鼠单克隆抗体 [26903] on Mouse embryos at the 0- or 1-somite stages - F-actin (magenta) and GTP-Rac1 (green)



Immunofluorescence for the Rac1-GTP using Rac1-GTP 小鼠单克隆抗体 [26903] on the polar cells of mouse embryo. Rac1-GTP staining (Red) is observed only on the apical surface of the polar cells

