

RAB9A PAB

Rab9A Polyclonal Antibody

货号: 21073

基因符号: RAB9A

描述: Rab9A Rabbit Polyclonal Antibody

背景: Ras-related protein Rab-9A mediates late endosome to trans-Golgi transport. Recently Rab9 has been implicated as a key cellular component for human HIV, Ebola, Marburg, and measles virus replication.

免疫原: A synthetic peptide from the C-terminal of human Rab9A protein

经过测试的应用: ELISA, WB, IHC, IP

推荐稀释度:

ELISA: 1:100-1:5000

WB: 1:100-1:1000

IHC: 1:50-1:100

浓度: 0.2 mg/ml

种属反应性: Rabbit

形式: Liquid

克隆性: Polyclonal

亚型: IgG

纯化:: Purified from serum

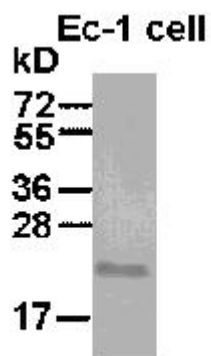
Preservative: No

成分: PBS (without Mg^{2+} and Ca^{2+}), pH 7.4, 150 mM NaCl, 50% glycerol

种属反应性: Rab9A antibody recognizes Rab9A proteins from vertebrates.

储存条件:: Store at $-20^{\circ}C$. Avoid repeated freezing and thawing

Western blot:



Wb: anti-Rab9A pAb

EC-1 whole-cell lysate was used for Western blot with anti Rab9A polyclonal antibody (cat # 21073).