

RAB7-GTP

Anti-Rab7GTP Mouse Monoclonal Antibody

Cat. #: 26923

Size: 30 μ L

Gene Symbol: RAB7

Description: Anti-Rab7-GTP Mouse Monoclonal Antibody

Background: Rab7 belongs to the Rab family of small GTPases. Rab7 is located in the late endosome, lysosome, cytoplasmic vesicle, phagosome and melanosome. It is involved in the late endocytic transport and contributes to the maturation of phagosomes.

Immunogen: Recombinant full length protein of active Rab7

Applications: IP, IHC and IF (**Not applicable for WB since SDS denatures Rab7 GTPase**)

Recommended Dilutions:

IP: 1 μ g for 1~2 mg total cellular proteins

IHC, IF: 1:50-1:250

Concentration: 1 mg/ml

Host Species: Mouse

Format: Liquid

Clonality: Monoclonal

Isotype: IgG

Purity: Purified from ascites

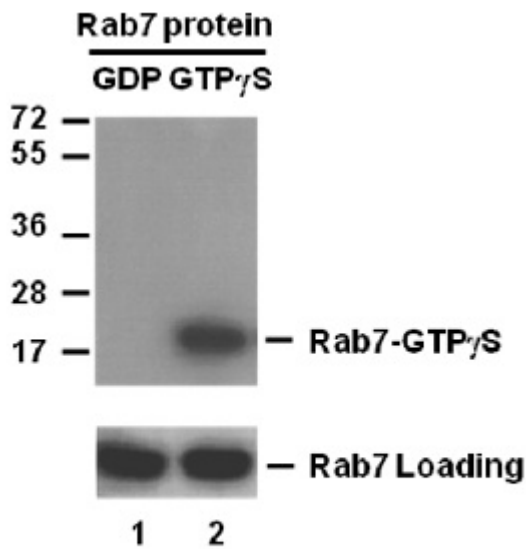
Preservative: No

Constituents: PBS (without Mg^{2+} and Ca^{2+}), pH 7.4, 150 mM NaCl, 50% glycerol

Species Reactivity: Anti-Rab7-GTP monoclonal antibody recognizes active Rab7 proteins of vertebrates.

Storage Conditions: Store at $-20^{\circ}C$. Avoid repeated freezing and thawing

Immunoprecipitation/Western blot:



IP: anti-active Rab7 mAb

IB: anti-Rab7 pAb

Rab7 Activation Assay.

Purified full-length Rab7 proteins were immunoprecipitated after treated with GDP (lane 1) or GTP γ S (lane 2). Immunoprecipitation was done with the anti-Rab7-GTP monoclonal antibody (Cat. No. 26923). Immunoblot was with an anti-Rab7 polyclonal antibody (Cat. No. 2 069).