

## RAB6A PAB

### Rab6A

货号: 21068

基因符号: RAB6A

描述: Rab6A Rabbit Polyclonal Antibody

背景: The small GTPase Rab6 regulates vesicle trafficking at the level of Golgi. There are three forms of Rab6: Rab6A, Rab6A' (also called Rab6C) and Rab6B. Rab6A and Rab6C are splice variants of the same gene. Rab6A is localized in the Golgi and regulates a COPI-independent pathway of retrograde membrane transport from the Golgi complex to the endoplasmic reticulum.

免疫原: A synthetic peptide from the internal region of human Rab6A protein

经过测试的应用: ELISA, WB, IHC

推荐稀释度: ELISA 1:100-1:5000

WB 1:100-1:1000

IHC 1:100-1:1000

浓度: 0.2 mg/ml

种属反应性: Rabbit

形式: Liquid

克隆性: Polyclonal

亚型: IgG

纯化: Purified from serum

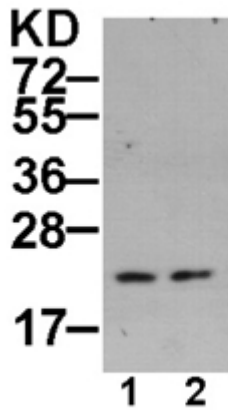
**Preservative:** No

成分: PBS (without  $Mg^{2+}$  and  $Ca^{2+}$ ), pH 7.4, 150 mM NaCl, 50% glycerol

种属反应性: Rab6A antibody recognizes Rab6A proteins from vertebrates.

储存条件: Store at  $-20^{\circ}C$ . Avoid repeated freezing and thawing

## Western blot:



## WB: anti-Rab6A pAb

HEK-293T (lane 1) and MEF (lane 2) whole-cell extracts were used for Western blot with anti Rab6A polyclonal antibody (cat # 21068).