

RAB5C PAB

Rab5C Polyclonal Antibody

货号: 21038

基因符号: RAB5C

描述: Rab5C Rabbit Polyclonal Antibody

背景: Rab5, consists of three isoforms, Rab5A, Rab5B, and Rab5C, is a small GTPase that is localized to early endosomes. It regulates the fusion between endocytic vesicles and early endosomes, as well as the homotypic fusion between early endosomes.

免疫原: A synthetic peptide from Rab5C

经过测试的应用: ELISA, WB, IHC

推荐稀释度: ELISA 1:100-1:5000

WB 1:100-1:1000

IHC 1:100-1000

浓度: 0.2 mg/ml

种属反应性: Rabbit

形式: Liquid

克隆性: Polyclonal

亚型: IgG

纯化: Purified from serum

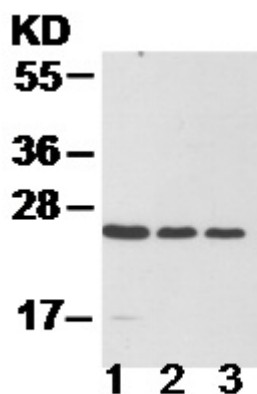
Preservative: No

成分: PBS (without Mg^{2+} and Ca^{2+}), pH 7.4, 150 mM NaCl, 50% glycerol

种属反应性: Rab5C antibody recognizes Rab5C from vertebrates.

储存条件: Store at $-20^{\circ}C$. Avoid repeated freezing and thawing

Western blot:



WB: anti-Rab5C pAb

EC-1 (lane 1), HEK-293T (lane 2) and MEF (lane 3) cell lysates were used for Western blot with anti Rab5C polyclonal antibody (cat # 21038).