

## RAB5 PAB

### Rab5 Polyclonal Antibody

**Cat. #:** 21151

**Gene Symbol:** RAB5

**Description:** Anti-Rab5 Rabbit Polyclonal Antibody

**Background:** Rab5, consists of three isoforms, Rab5A, Rab5B, and Rab5C, is a small GTPase that is localized to early endosomes. It regulates the fusion between endocytic vesicles and early endosomes, as well as the homotypic fusion between early endosomes.

**Immunogen:** Three synthetic peptides from the internal region of human Rab5A, Rab5B and Rab5C proteins, respectively

**Applications:** ELISA, WB, IHC, IP

**Recommended Dilutions:**

ELISA: 1:100–1:5000

WB: 1:100–1:2000

IHC: 1:100–1:1000

**Concentration:** 0.2 mg/ml

**Host Species:** Rabbit

**Format:** Liquid

**Clonality:** Polyclonal

**Isotype:** IgG

**Purity:** Purified from serum

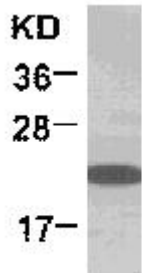
**Preservative:** No

**Constituents:** PBS (without  $Mg^{2+}$  and  $Ca^{2+}$ ), pH 7.4, 150 mM NaCl, 50% glycerol

**Species Reactivity:** Rab5 antibody recognizes Rab5A, Rab5B and Rab5C from vertebrates.

**Storage Conditions:** Store at  $-20^{\circ}C$ . Avoid repeated freezing and thawing

## Western blot:



**WB: anti-Rab5 pAb**

EC-1 whole-cell lysate was used for Western blot with anti Rab9A polyclonal antibody (cat # 21073).