

## RAB41 PAB

产品名称: Rab41 兔多抗

货号: 21084

基因符号: RAB41

描述: Rab41 兔多抗

背景: Rab GTPases are Ras-like small molecular weight GTP binding proteins that are involved in various steps along the exocytic and endocytic pathways. Rab41 is widely expressed in brain, testis, lung, heart, ovary, colon, kidney, uterus and spleen.

免疫原: A synthetic peptide from the N-terminal region of human Rab41 蛋白

经过测试的应用: ELISA, WB, IHC, IP

推荐稀释比:

ELISA: 1:100-1:5000

WB: 1:200-1:1000

IHC: 1:10-1:500

**Concentration:** 0.2 mg/ml

种属反应性: Rabbit

形式: Liquid

克隆性: Polyclonal

亚型: IgG

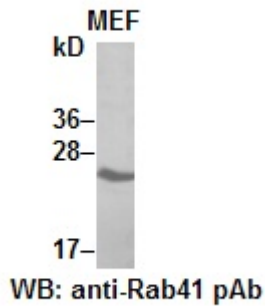
纯化: Purified from serum

成分: PBS (without  $Mg^{2+}$  and  $Ca^{2+}$ ), pH 7.4, 150 mM NaCl, 50% glycerol

种属反应性: Rab35 antibody recognizes Rab35 proteins from vertebrates.

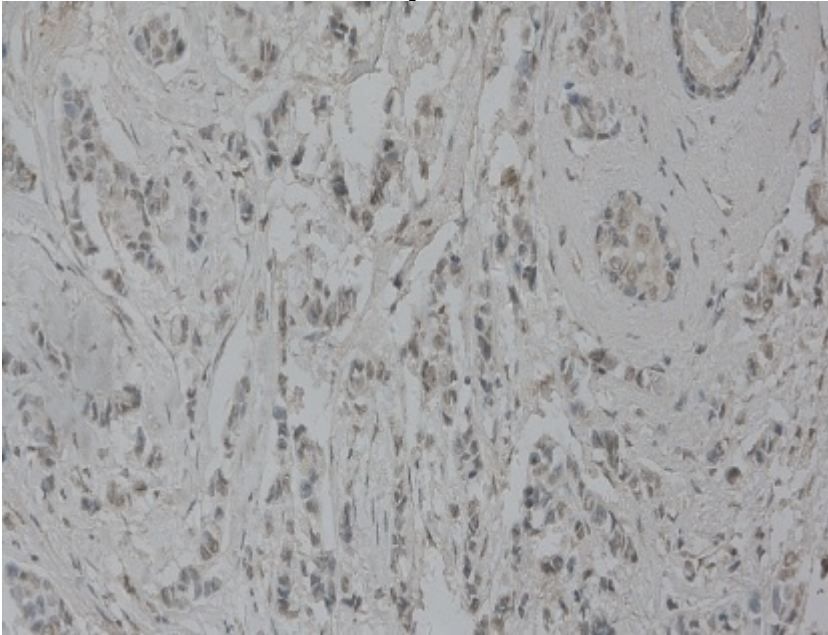
储存条件: Store at  $-20^{\circ}C$ . Avoid repeated freezing and thawing

## 蛋白质印迹:



MEF whole-cell lysate was used for Western blot with anti Rab41 兔多抗 (cat # 21084).

## Immunohistochemistry:



Immunohistochemical staining of formalin-fixed paraffin-embedded breast carcinoma using the affinity purified anti-Rab41 兔多抗 (Cat # 21084) with 1:50 dilution.